

PULSANTIERA - DISPLAY & INTRO. MONETA (1631)

FRONTE PORTA (1632)

INTERNO PORTA (1633)

CASSONE E PARTI (1634)

GEARMOTOR COFFEE GROUP (483)

COMPONENTS DISPENSER CUPS (628)

COFFEE BEAN HOPPER COFFEE CAPACITY 3,7 Kg. (632)

COMPONENTS CANISTER DOS. BVM 300 (908)

COMPONENTI CALDAIA ESPRESSO (2052)

ASS.CALDAIA ESP. + 4 ELV - NUOVA VERSIONE (2053)

COMPONENTS EL-VALV. 3 VIE OLAB (930)

ASSEMBLY DOSER CAFFE (964)

GR 3 ELETTROV. 24V DC 2 VIE (116)

ASSEMBLY GRINDER LEI400 (1069)

DISPENSER BREWING (1062)

NEW CANISTER DOSER (1198)

VACUUM CLEANERS & PARTS OF COMPLETION (1227)

ASPIRATORE VERTICALE (2047)

ASSEMBLY MASCHERE MIXER (1233)

PUMP WATER & FLOW DETECTOR (1235)

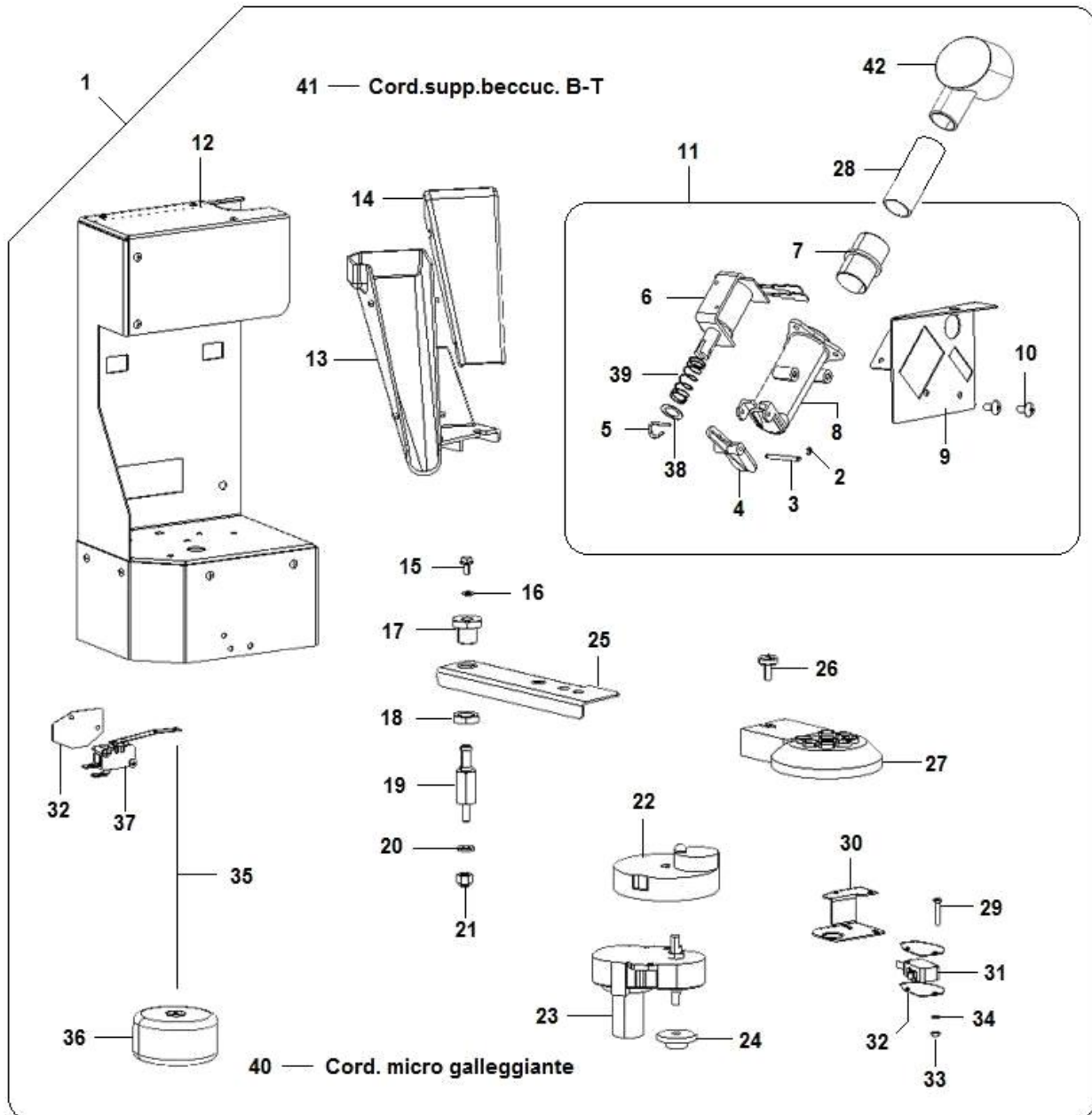
ASSEMBLY PLATE GR-COFFEE LEI 600 (1292)

ASSEMBLY MACINADOS. SUPP. SCATOLE LEI600 (1291)

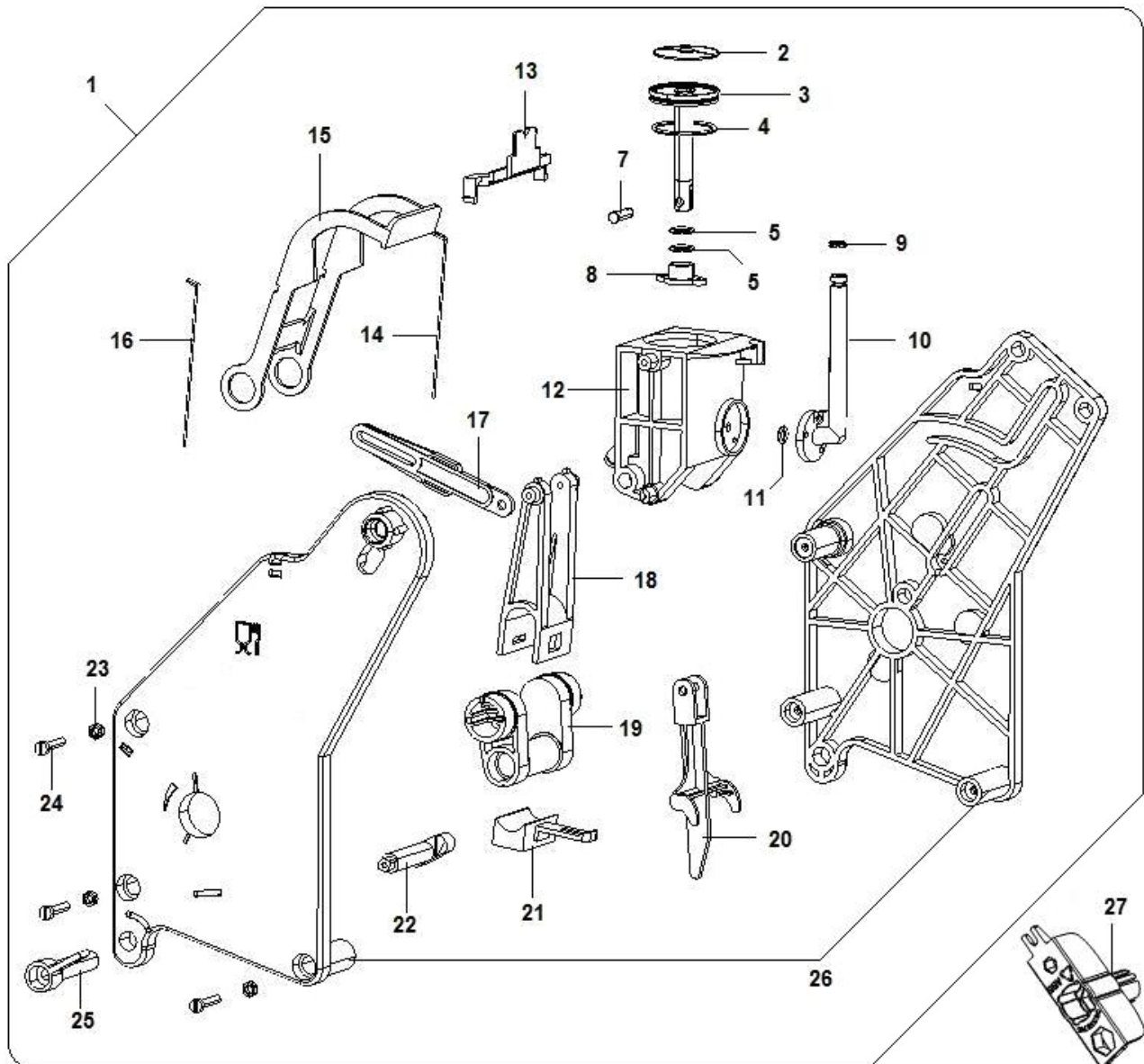
ASSEMBLY COLUMN CUP DISPENSER (1287)

ASSEMBLY ELECTRICAL BOX LEI 600 (1286)

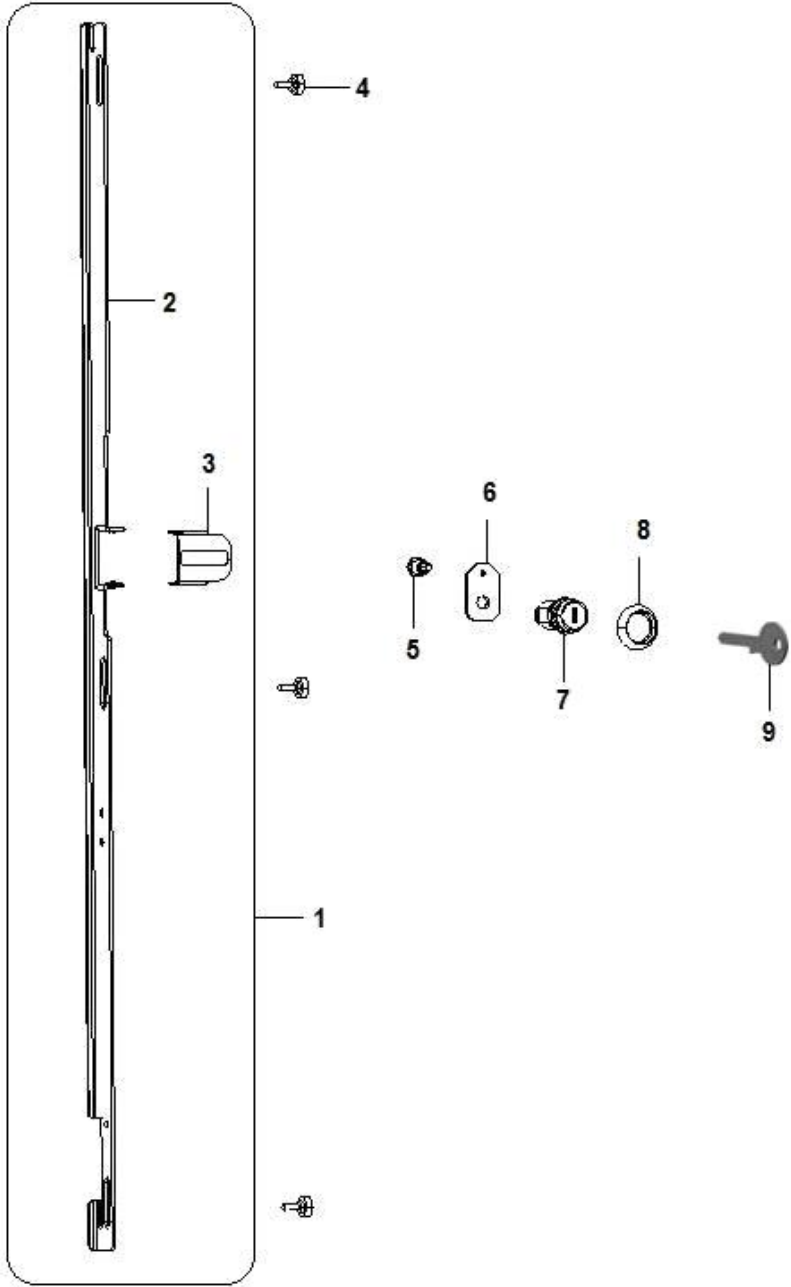
ASSEMBLY PISTON(7)



Pos.	Code	Description
0001	96077810-02CL	C/O.BRACC.UGELLI/ZUCCH.LEI400
0002	37000816	seeger ring
0003	00110823	lever's fulcrum pin
0004	05123715	doser lever with hole
0005	00110824	electromagnet ring
0006	20008946	24V DC 15% magnet
0007	05096215	sugar pipe connection
0008	05104715-02M37	Sugar supply brown flange
0009	06050011	LEI400 powder funnel support plate
0010	32346536	d.9 3,9*9,5 zn screw
0011	96077710CL	LEI400 sugar distrib. support assy
0012	06049612-02	ASS.BRACCIO UGELL/ZUCCH.LEI400
0013	05137925	antares brown sugar slide
0014	05138025	brown sugar slide cover
0015	32050416	M4x8 screw
0016	35157616	plain washer Ø.4,3 ac.
0017	19057411	nozzle arm bush
0018	04014111	hexagonal nut 1/4GAS
0019	19057311-04	Antares nozzle arm pin
0020	35155416	6.4 plain washer
0021	34110416	6MA hex nut
0022	05089715M37	nozzle drive cam brown
0023	20018826	24V 2,2nF 100V gearmotor
0024	05110715	orion micro cam
0025	01509811-01	Antares nozzles arm support
0026	19043521	fixing knob
0027	05089925-02M37	8 pos.nozzles supp.flange PA66
0028	09027653-01	PVC pipe sect 20x26 FDA
0029	32025816	3MA x 18 screw
0030	01630021	MICRO SUPPORT BRACKET
0031	26005126	microswitch with wheel
0032	08004111	microswitch insulation
0033	34102716	M3 hexagonal nut
0034	35160216	self-locking diam.3.2
0035	22021116	0,80 nylon wire
0036	05074412	floater assembly
0037	26013726	too full microswitch
0038	35156626	Ø 9.2 plain washer
0039	07016911	sugar doser spring
0040	22130312	orion GP micro floater cable
0041	22111312	nozzle support cable low volt.
0042	05123015M37	BROWN SUGAR NOZZLE

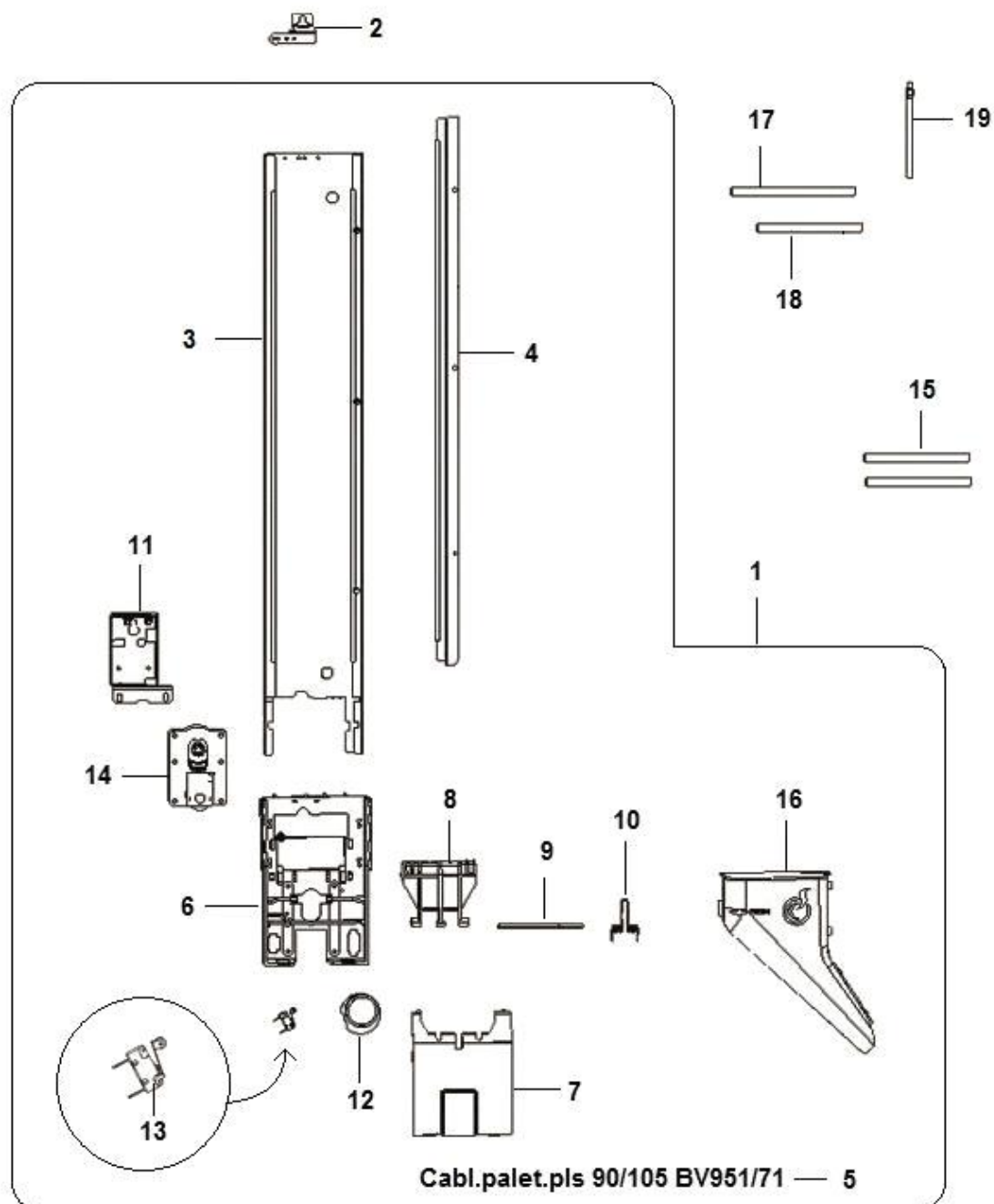


Pos.	Code	Description
0001	95028410M09	New black plastic coffee group ST. VP DB
0002	16012021	coffee group filter
0003	05161225M06	waste coffee 2holes eject rod
0004	36363116	Joint 2118 SH70 VITON
0005	36211916	OR 2037 gasket
0007	05107525M09	Black DS coffee group rivet
0008	05106725M09	Black DS coffee-group cup bush
0009	36351316	o-ring for coffee group pipe
0010	05106825M09	Black DS Coffee-group cup tube
0011	36210916	OR2021 gasket
0012	05106625M09	Black DB Coffee- group cup
0013	05133525M09	SPACER FOR BLACK DS COFFEE GROUP SIDES
0014	07017921	left spatula spring
0015	05107025M09	Black DS Coffee group spatula
0016	07017911	right spatula spring
0017	05107425M09	Black DS Coffe group drive rod
0018	05107125M09	Black DB Coffee group connecting rod
0019	05107625M09	DB Coffee group crank
0020	05148325M09	Black coffee group rod lifter
0021	05107225M09	Black DS Coffe group bracket
0022	05107925M09	Black DS Coffe group locking rod
0023	34102836	4MA nut hexagonal
0024	32060936	TC 4MAx20 screw
0025	05107825M09	Black DS coffee group locking lever
0026	43123920	front/rear shoulder assembly w/knob
0027	05358715M09	display transp.protection





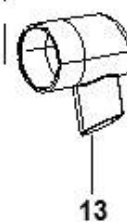
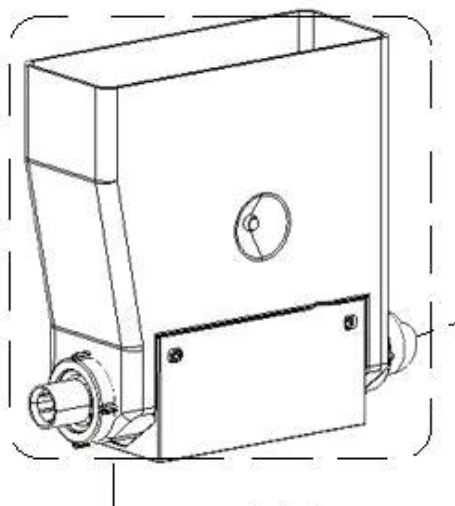
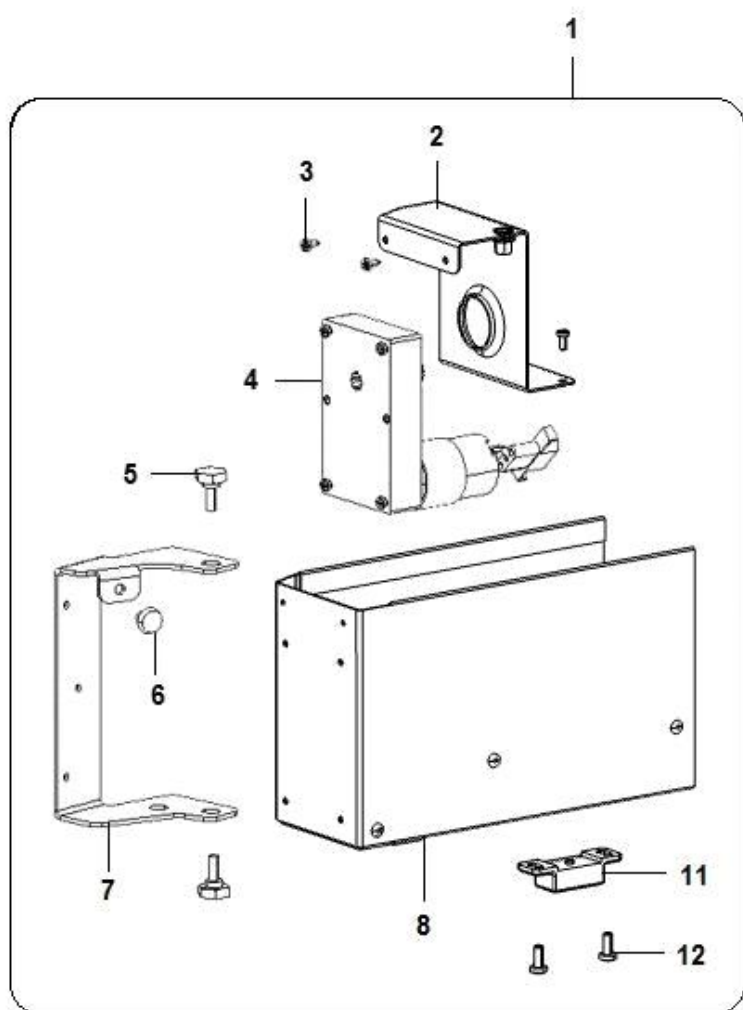
Pos.	Code	Description
0001	01857370-01	LEI 400 plate door lock rod assy
0002	01826131-02ZNC	door lock rod
0003	01826251	LEI 400 plate door moving rod plate
0004	19055521	lock rod screw
0005	12016116-01	DRAWER WHEEL PIN
0006	01768221-02	BVM971 Rielda lock hook
0007	41029616	Rielda standard lock
0008	19126521	Lock protection M.M.
0009	41029836	Rielda's lock key EMK handle



Pos.	Code	Description
0001	91017910-01	LEI500 L spoons dispenser assy
0002	01840021	LEI400 plate door spoon dispenser square
0003	01837711-06ZNC	Spoons container L= 90-105
0004	01837811-06ZNC	Spoon dispenser spacer L= 90
0005	22180132	sp.disp.cable 90/105 BV951/971
0006	05241315-03M05	grey spoon box
0007	05241615M05	grey spoon box cover
0008	05149015-02M37	Spoons ejector for iris es
0009	19059811-01	Iris spoons ejector shaft
0010	07021731	Cup disp.90/105foot spring 1,3
0011	01839912-02	IVS spoons dispenser frame w/inserts
0012	05241515-03M00	Spoon dispenser moving cam
0013	26029626	microswitch(proof)
0014	20020926-03	24DC 25rpm motor for spoondisp
0015	12047111	spoons ejection tube
0016	05241415-02M00	Spoon slide right BV951
0017	12013611-02	Metal weight for spoons 105mm
0018	12004611-02	Metal weight for spoons 90mm
0019	24023010	spoon weight magnet

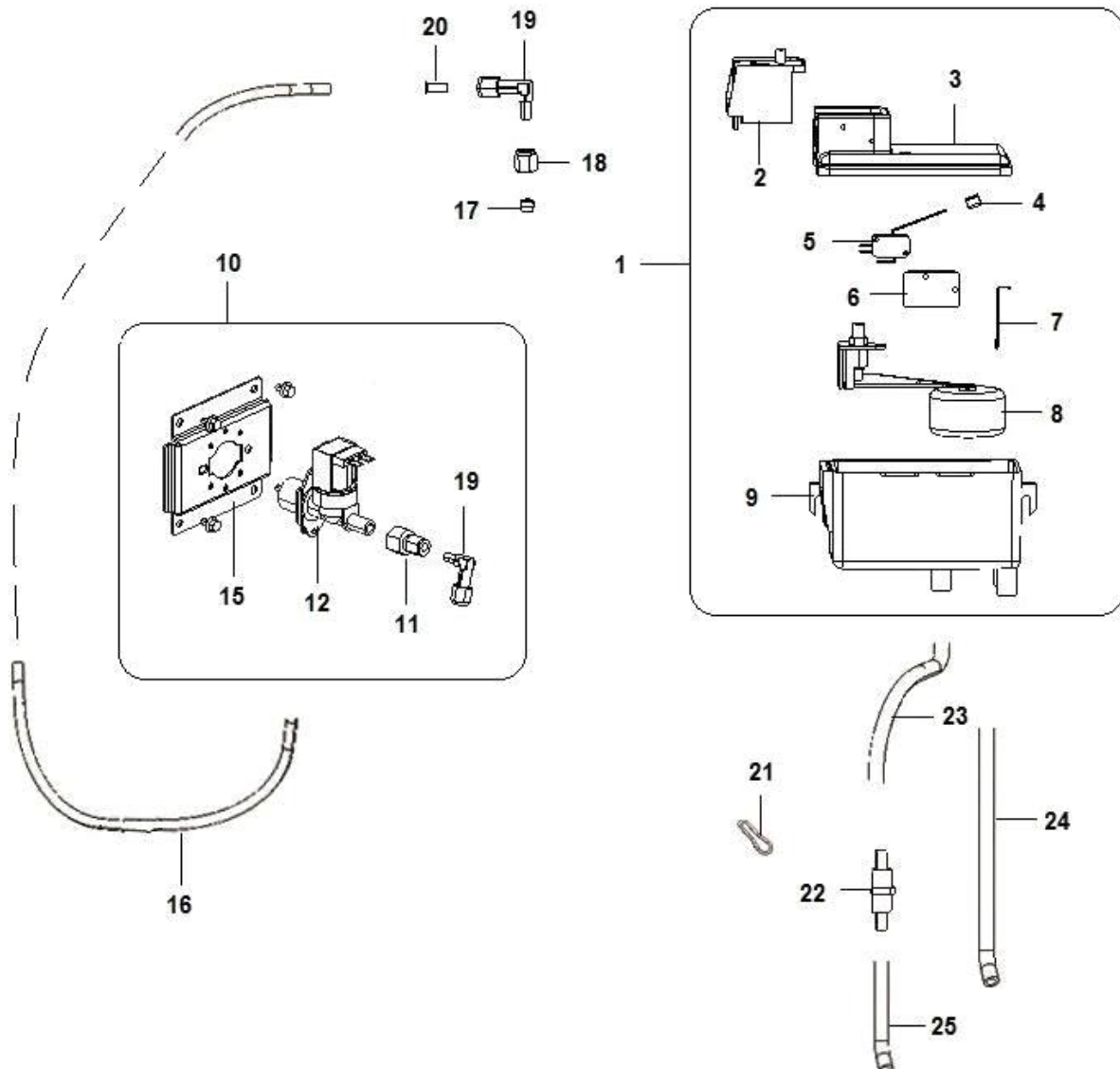


Cabl.motorid.scatt.aggiunt.LEI600PP — 10

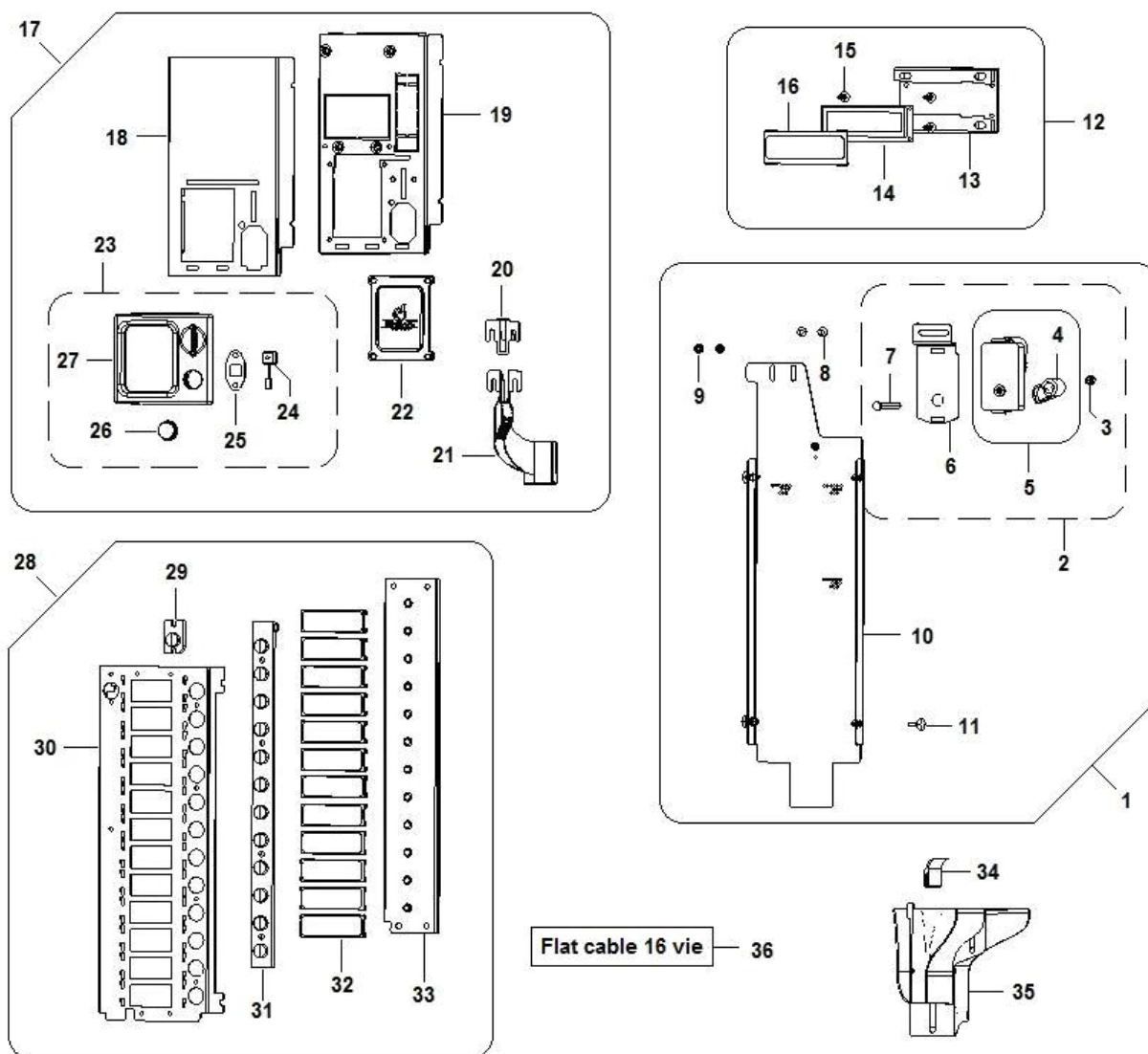




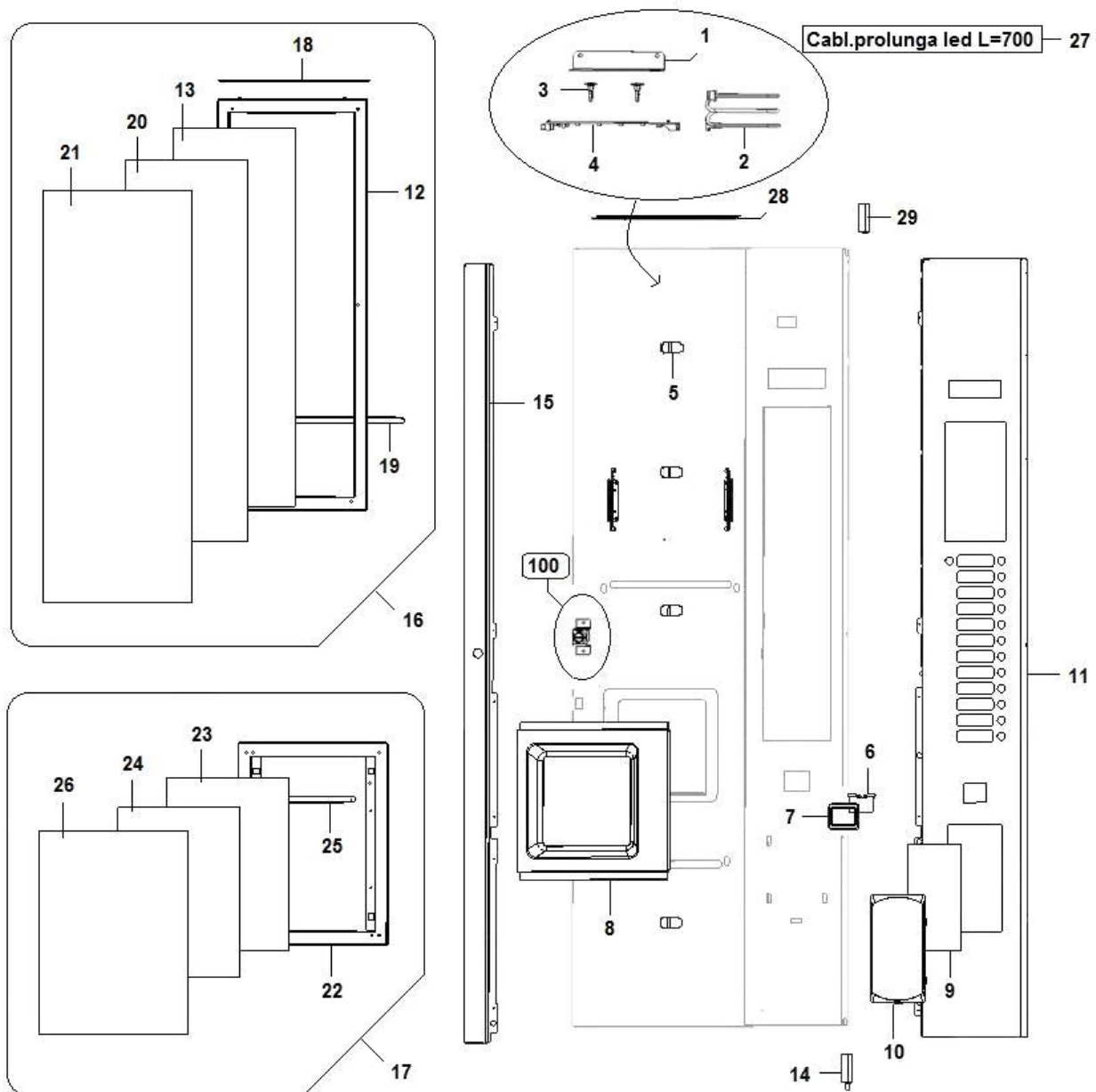
Pos.	Code	Description
0001	96090010-01	LEI 600Exp.flat door addict.canister assy
0002	06128722	Extra canister carter w/insert
0003	32227116	Blunt self-thread.screw2,9X6,5
0004	20020336-01	24V DC 40G/M w/cable w/varistore motor
0005	19055521	lock rod screw
0006	00104883	rubber buffer
0007	06128211	Extra canister supporting plate
0008	06128622	Extra canister supporting plate w/insert
0009	05245226-01	BVM300 dispenser box black cover
0010	22184432	LEI 600 PD extra canist. motor cable
0011	20015316	magnet ratchet
0012	32227256	3.9x9.5 self-tapping screw
0013	05320125M00	LEI 500 sugar slide connection



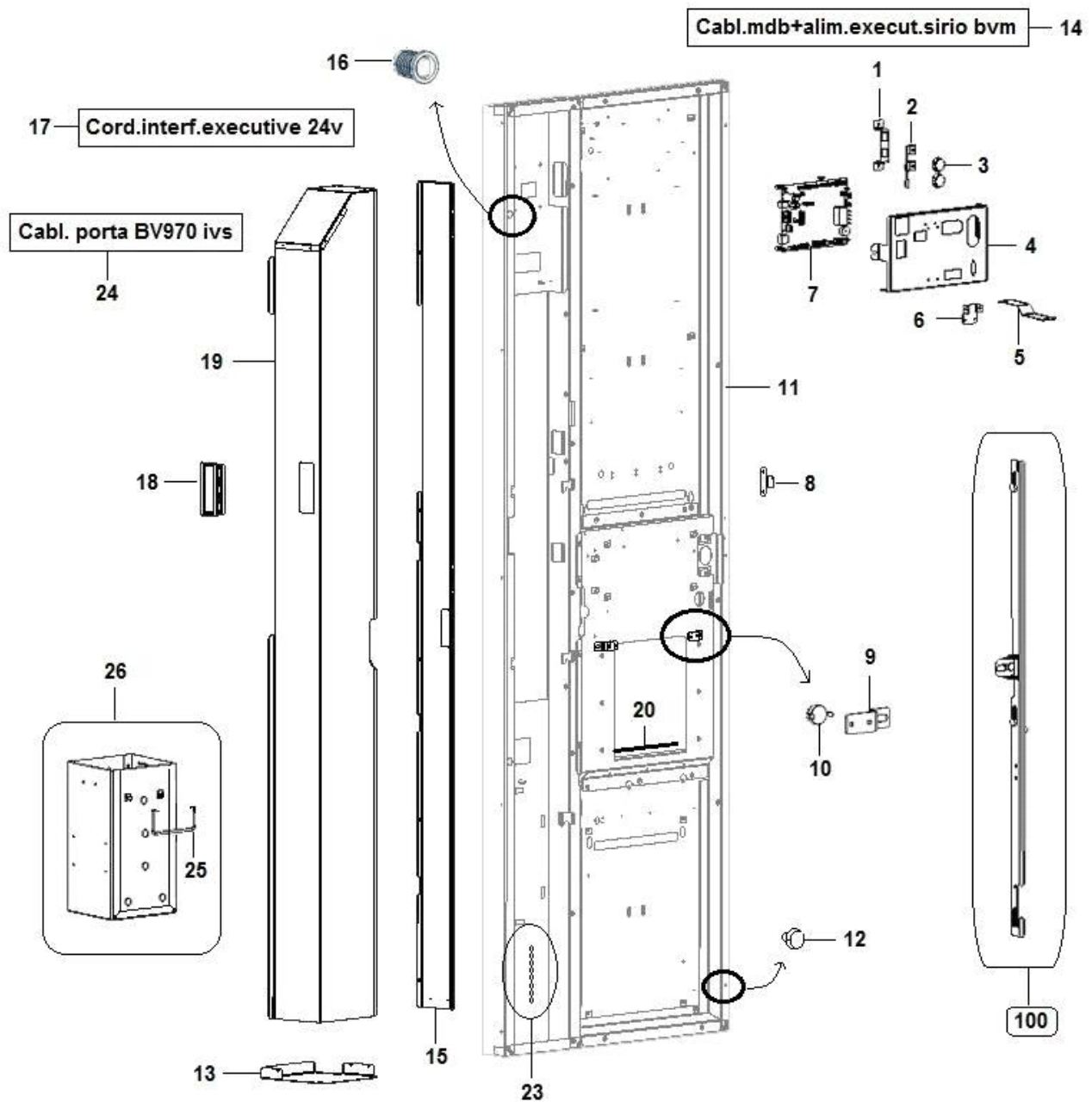
Pos.	Code	Description
0001	93008420	water tank assy
0002	41023716	float valve support
0003	41024016	cover
0004	41024116	microswitch guide support
0005	41024316	microswitch
0006	41024516	plastic insulating plate
0007	41023616	Micro lever inox rod
0008	16017916	complete floating valve
0009	41023916	tank
0010	25039220-01	el.valv support assy LEI700STD
0011	04035526	Straight connection 6-1/4 A-234
0012	25000166	inlet water electrovalve 24v d
0015	01978811-03ZNC	E.V. universal support
0016	09110016-01	CALIBRATED Pmax 68BAR PTFE 6x4 TUBE
0017	19046526	locking bush
0018	04035626	nut for elbow connection
0019	04033236	turning elbow connection 1/8
0020	19004326	reinforcing bush
0021	07010711	clapper
0022	16014316	water filter
0023	09029753-01	8x12 silicone transp.pipe
0024	09027623-01	12x16 L= 700 PVC pipe
0025	09029763-01	5x9 transparent silicone pipe



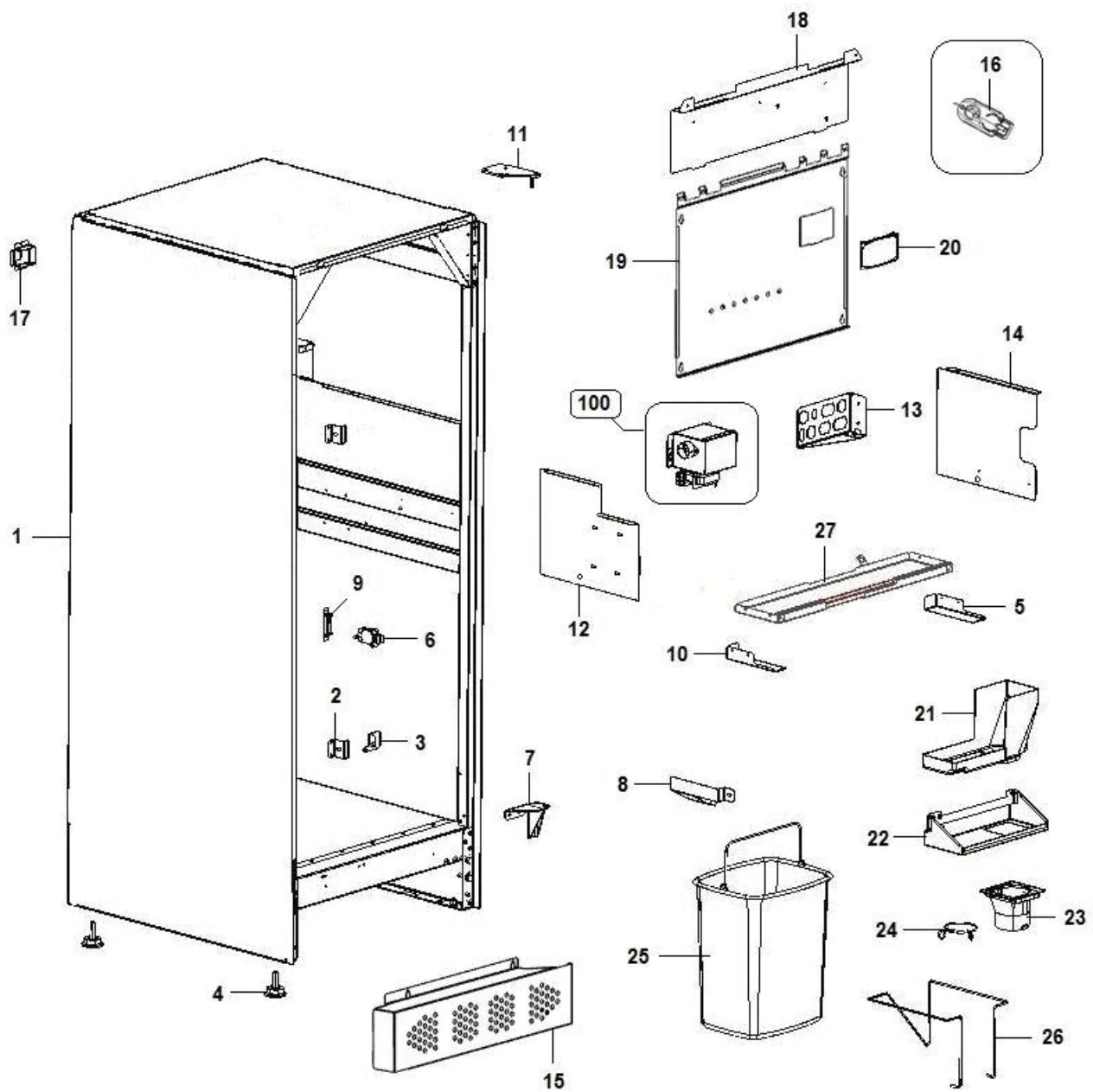
Pos.	Code	Description
0001	96073710-01	token disp/motor supprt assy
0002	96065520-01	BVM951/971 change giver motor assy
0003	34110416	6MA hex nut
0004	05192815-02M78	Grey change giver cam
0005	20031216-02	change giver gearmotor
0006	01799011-03	change giver motor support
0007	32126616	TE 6MAX60 ZN UNI-5739 screw
0008	32122916	M5x10 screw
0009	34115416	M5 nut with washer
0010	01825812-05	BVM972 coin mech. support assy
0011	19055521	lock rod screw
0012	01857220-01	BVM 9597display assembly
0013	01793021-01	display support metal plate
0014	26047936	New display 16x2 cable 650mm
0015	33066316	card spacer
0016	05232515M00	display transp.protection
0017	06004852P09	C/O MASK STD LEI400 PP VEN
0018	06004551P09	LEI400PD pay system cover mask Vendare
0019	06081022	LEI400 plate door STD mask w/screw assy
0020	01807111-01	Plastic coin slide roof
0021	05233515M09	Coin Introduction slide black
0022	05296715M09	alphanumeric keypad covering
0023	05249010M09	BVM black coin mask w/button assy
0024	26019492	change giver button
0025	01796011	button support plate
0026	05232315M09	black change giver button
0027	05232215L86	Black money introd. mask + M/S
0028	26078710	LEI400 flat door keypad assy
0029	26078611	Flat door button
0030	06125212	keypad glass frame LEI600
0031	26078511-01	Flat door 12 buttons keypad
0032	05171715M00	BV975 AV keypad glass
0033	01966121-01	Transparent protection block
0034	05118241	pipe protection profile
0035	05233615-01M09	coin recovery channel black
0036	22175422-01	16pins flat cable 900mm



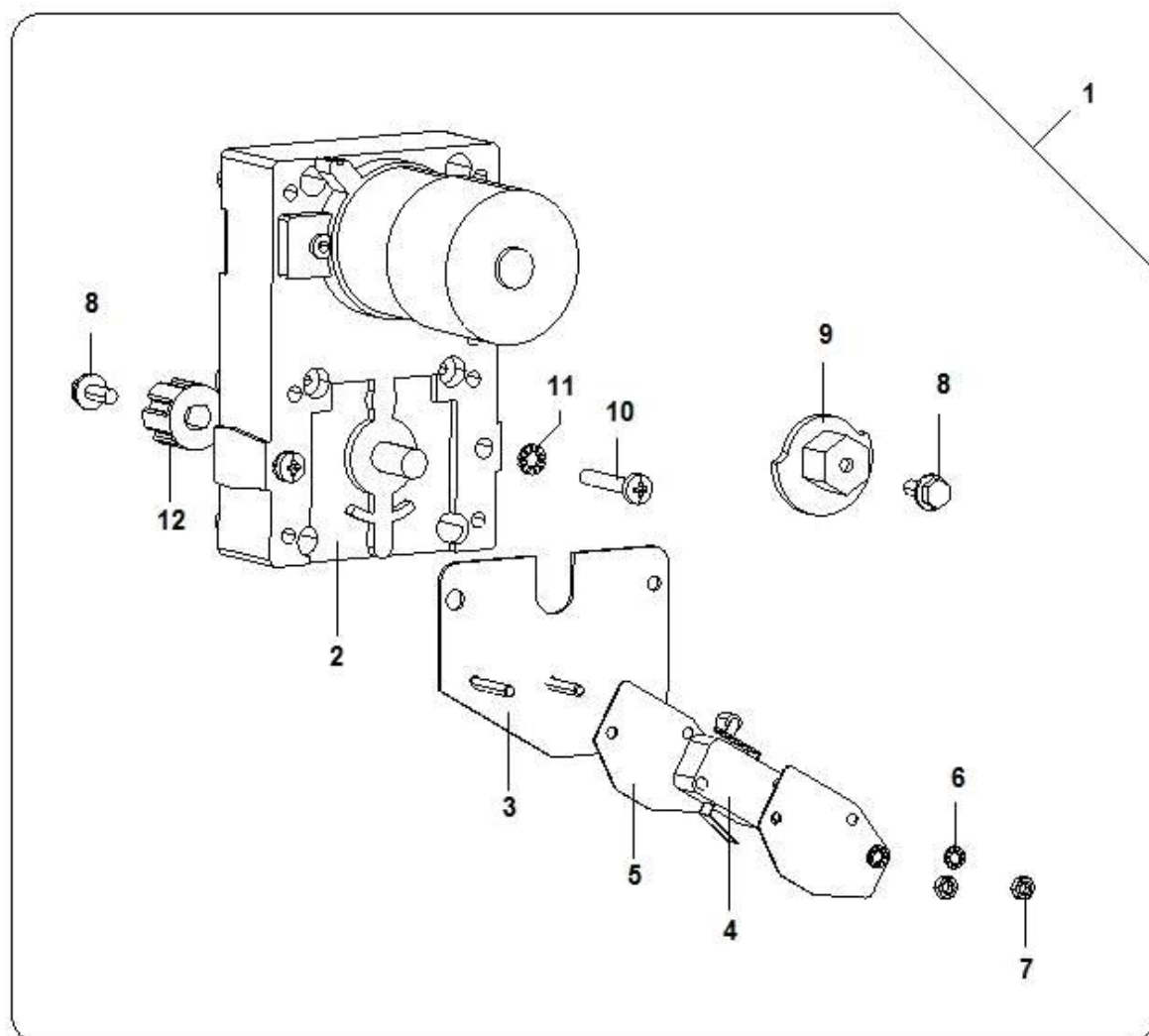
Pos.	Code	Description
0001	06120811-01	LEI400 flat door led stripe support
0002	22193712	LED Troll cable L= 1200
0003	33066326	CRCBSRE-3-01 boards spacer
0004	26057846	6 LEDS BAR COLD LIGHT
0005	05307611	Anti-breaking down spacer
0006	05083115-01M09	Black coin recovery door
0007	05246715M09	coin recovery frame black
0008	05306715-01M09	LEI400 plate door cup dispenser frame
0009	30263821	black panel lower showcase BVM
0010	05232625M00	transp.info panel h= 230 BVM951
0011	06171451P09	LEI400 plate door skirting board
0012	06095751ZNC	LEI400 plate door upper lexan frame
0013	05319221	LEI600 plate door upper opaline
0014	21011042	BV971 IVS hinge guide assy
0015	06095131P09	LEI600 PP lock side cover
0016	43152130	LEI600 PP upper lexan frame assy
0017	43152140	LEI600 PP upper lexan frame assy
0018	06127811P09	Upper lexan cover
0019	06095511-01	LEI400 plate door up.lexan frame handle
0020	30296611	BACKLITE SUP LEI600PP 2015
0021	05330822	coin recovery frame black
0022	06095411-03ZNC	LEI400 plate door lower lexan
0023	05307421	LEI400PP lower opaline
0024	30296411	BACKL INF LEI400/600PP 2015
0025	06095521-01	LEI400 plate door low.lexan frame handle
0026	05330712	coin recovery frame black
0027	22199532	LED EXTENSION CABLE L= 700
0028	06101311P09	LEI400 plate door upper aesthetic cover
0029	21010941-01	hinge plate

INTERNO PORTA (1633)

Pos.	Code	Description
0001	01641411	ANT-IMQ service button support
0002	26019482	service button
0003	05232315M18	red changegiver button
0004	01812211-07	COPE. SCHEDA CPU TROLL cod. MP0681AA
0005	01812631	LEI400 PP CUPS TURRET RETAINER
0006	01812931	LEI400PP CUPS TURRET RETAINER BRACKET
0007	26027336-04	Red SMT w/micro256K CPU board
0008	01827311-02	BV971 switch plate
0009	01930311	DAMPER SUPPORT
0010	33072916-01	BV931 door slow fall
0011	06005462-01	ASS.TELAIO PP LEI600 S/PRED.MONITOR
0012	00104883	rubber buffer
0013	06004331-02	LEI400 pay system protect. base
0014	22172312	SIRIOmdb+ executive supply cable
0015	06004421-01	LEI600 pay system protect. shoulder
0016	20022316	Cup container door round magnet
0017	22084222-01	executive cable
0018	05238516	PLASTIC HANDLE SOUTHCO BV971
0019	06197522ZNC	BV971 IVS pay system cover
0020	39001916	Push-buttons black sil. gasket
0023	21015816	Chainlet assy
0024	22177812-01	BV970 IVS door wiring
0025	12028011	coin box handle
0026	06123710	Coin box with handle and bush

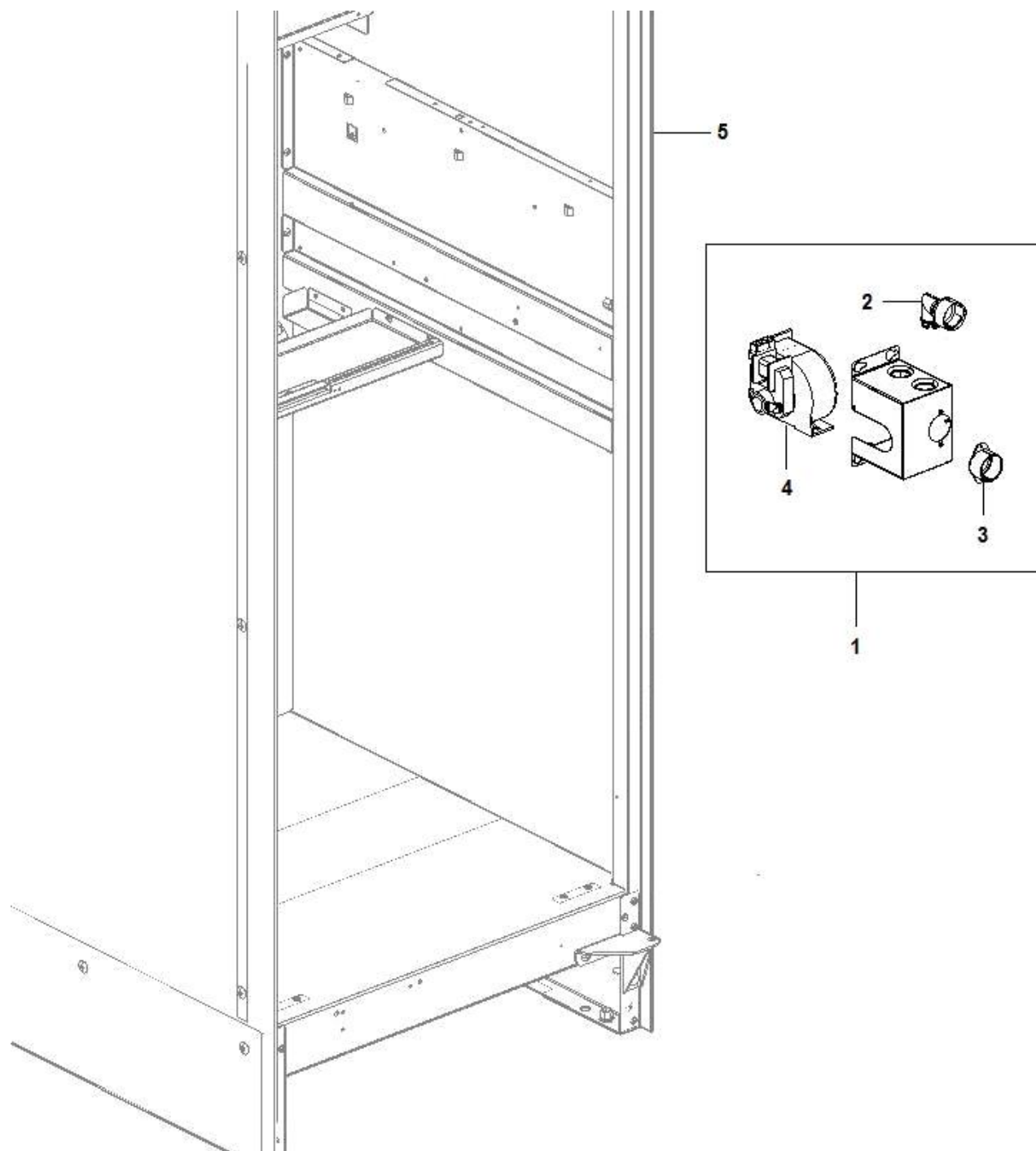


Pos.	Code	Description
0001	06012612-07P77	LEI 600 EXP. cabinet assy
0002	01828111-02	BV971 IVS lock hinge
0003	01882911	tray spinning plate
0004	21057212	foot.assy (m10x40) - -bvm971
0005	06003111	right tray support LEI 400 ES
0006	26016726	safety switch
0007	01823011-01	BVM971 IVS lower hinge
0008	01834521ZNC	Drain pipes guide
0009	01844011	Switch support
0010	06003011	left tray support LEI 400 ES
0011	01931612	Hinge with welded pin
0012	06066121-01	LEI 400 LT flank reinforcing carter
0013	01828411-02	plate for connectors BV971 IVS
0014	01899111-01	right side plating
0015	06113821-02P09	LEI 400 plate door skirting board
0016	05301915M84	P367C green service key
0017	01890411	Cable power supply box
0018	06007411-01ZNC	cover for electr box LEI 600
0019	06007511	back cover LEI 600 ES
0020	05233715M00	transp.info upper panel BVM951
0021	05157415-01M09	iris blackcoffeewaste conveyor
0022	06003621-01ZNC	waste bucket support LEI 400ES
0023	05168115-02M09	coffee waste bag fixing
0024	21056016-01	waste coffee bag spring d 68mm
0025	05137326	bucket
0026	07034421	MOLLA PER SECCHIO LEI 400
0027	06010012-03	middle shelf assy LEI 400 ES



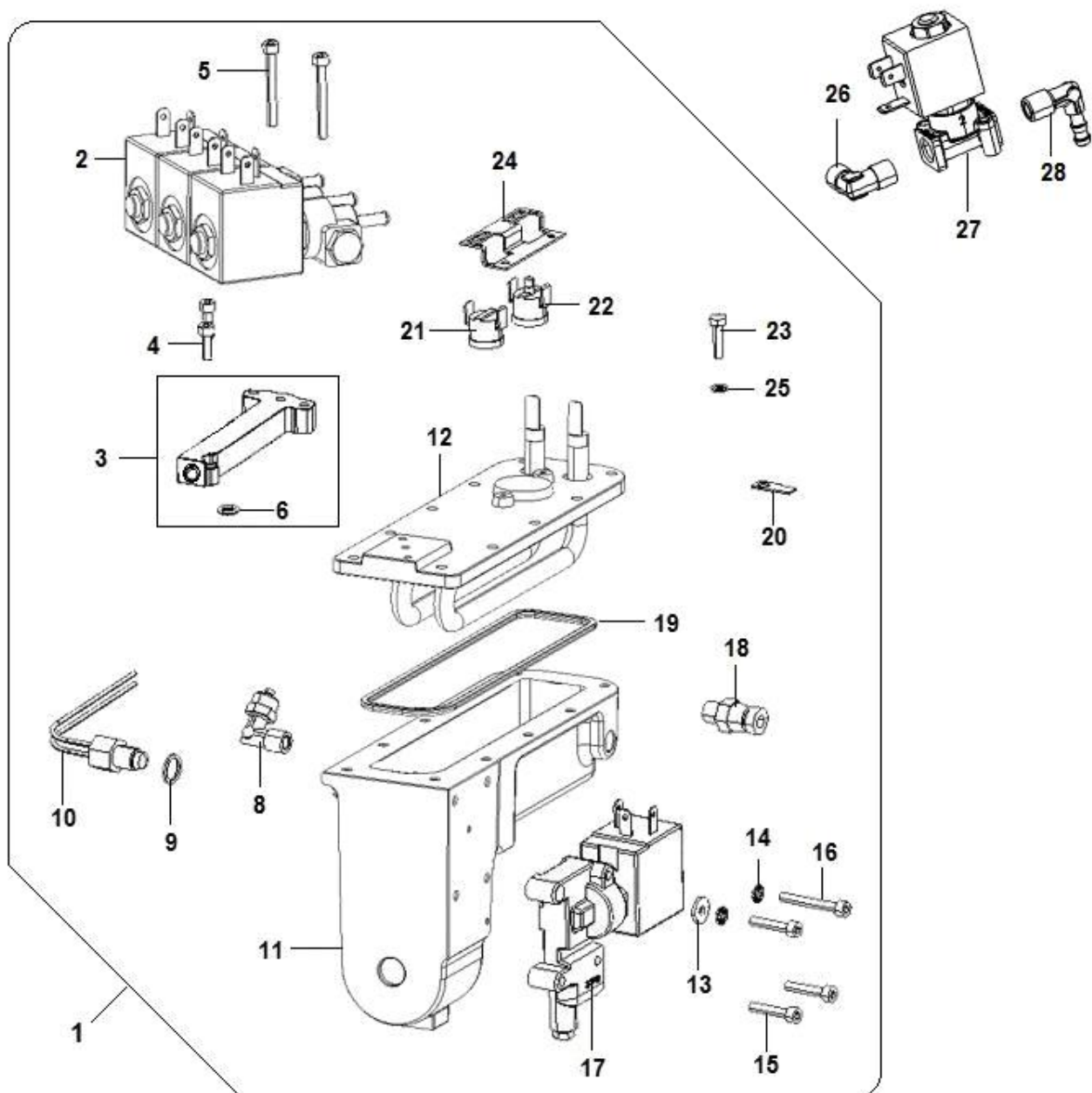
GEARMOTOR COFFEE GROUP (483)

Pos.	Code	Description
0001	20016810-04	Motor assy w-out/24V cable coffee group
0002	20014946-02	24VDC12rpm cof.group gearmotor
0003	01484212	bracket for micro
0004	26005126	microswitch with wheel
0005	08004111	microswitch insulation
0006	35160216	self-locking diam.3.2
0007	34102716	M3 hexagonal nut
0008	32050516	screw 4 Mx10
0009	05110915-01M09	black rotating group cam
0010	32061016	4M x 25 screw
0011	35160316	d. 4,2 IX self locking washer
0012	41081216	PLASTIC JOINT COFFE GROUP

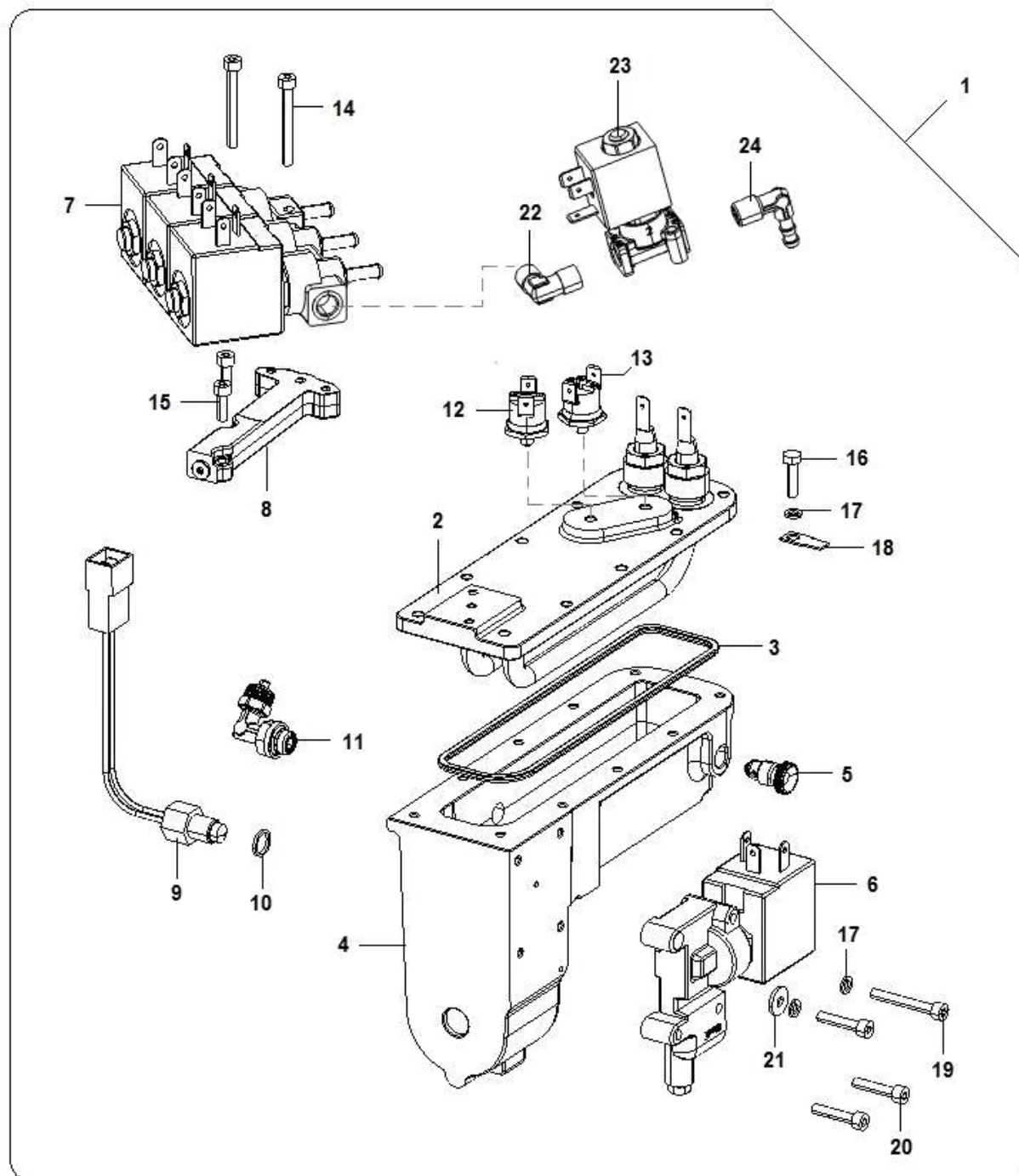


**ASPIRATORE VERTICALE (2047)**

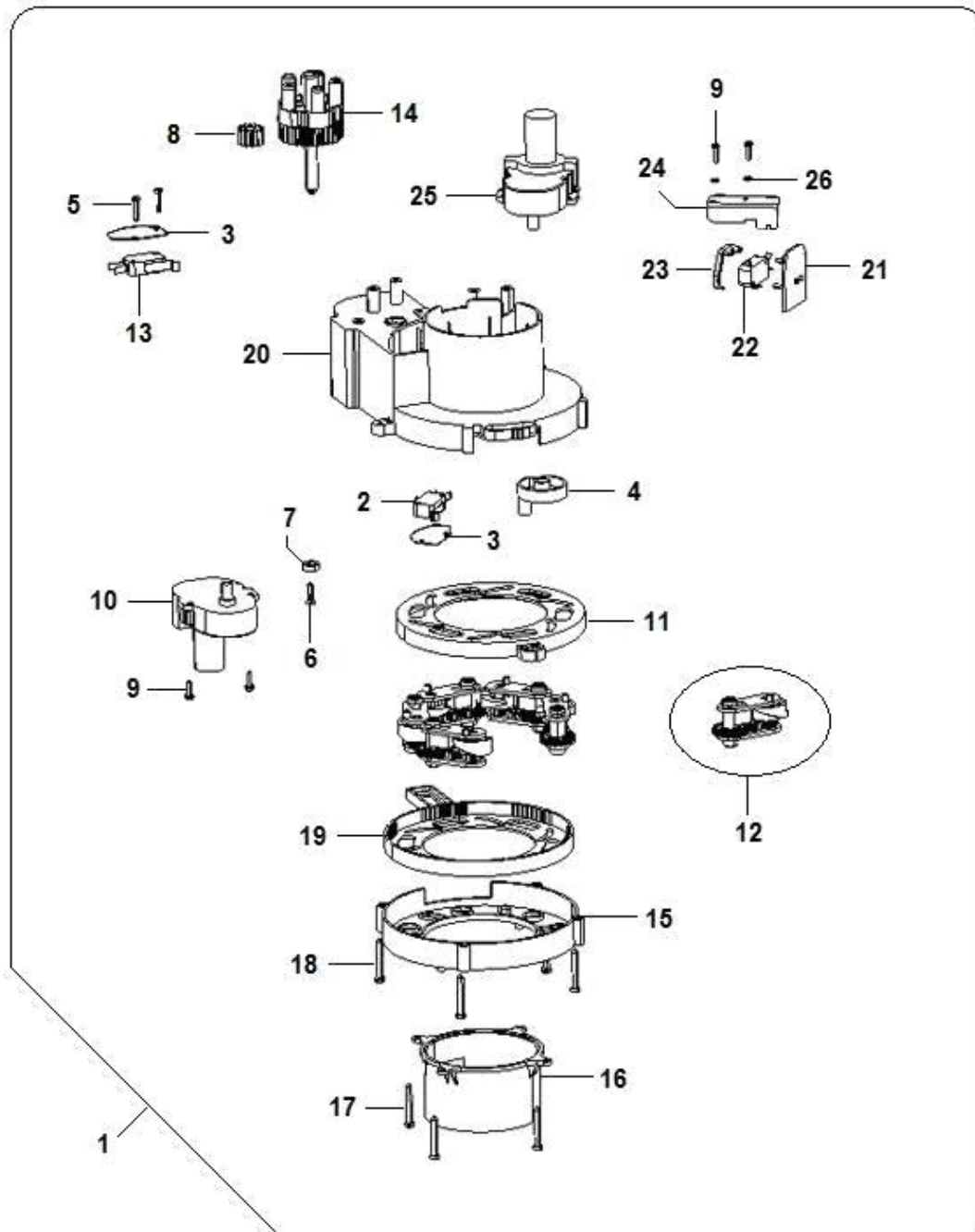
Pos.	Code	Description
0001	01831390CL	BVM972 Instant aspirator assy
0002	05248115-02M09	Suction pipe joint
0003	05071915	aspiration pipe connection
0004	20006356	aspirator w/spacer 952/972
0005	06429722P77	LEI 600 EXP. cabinet assy



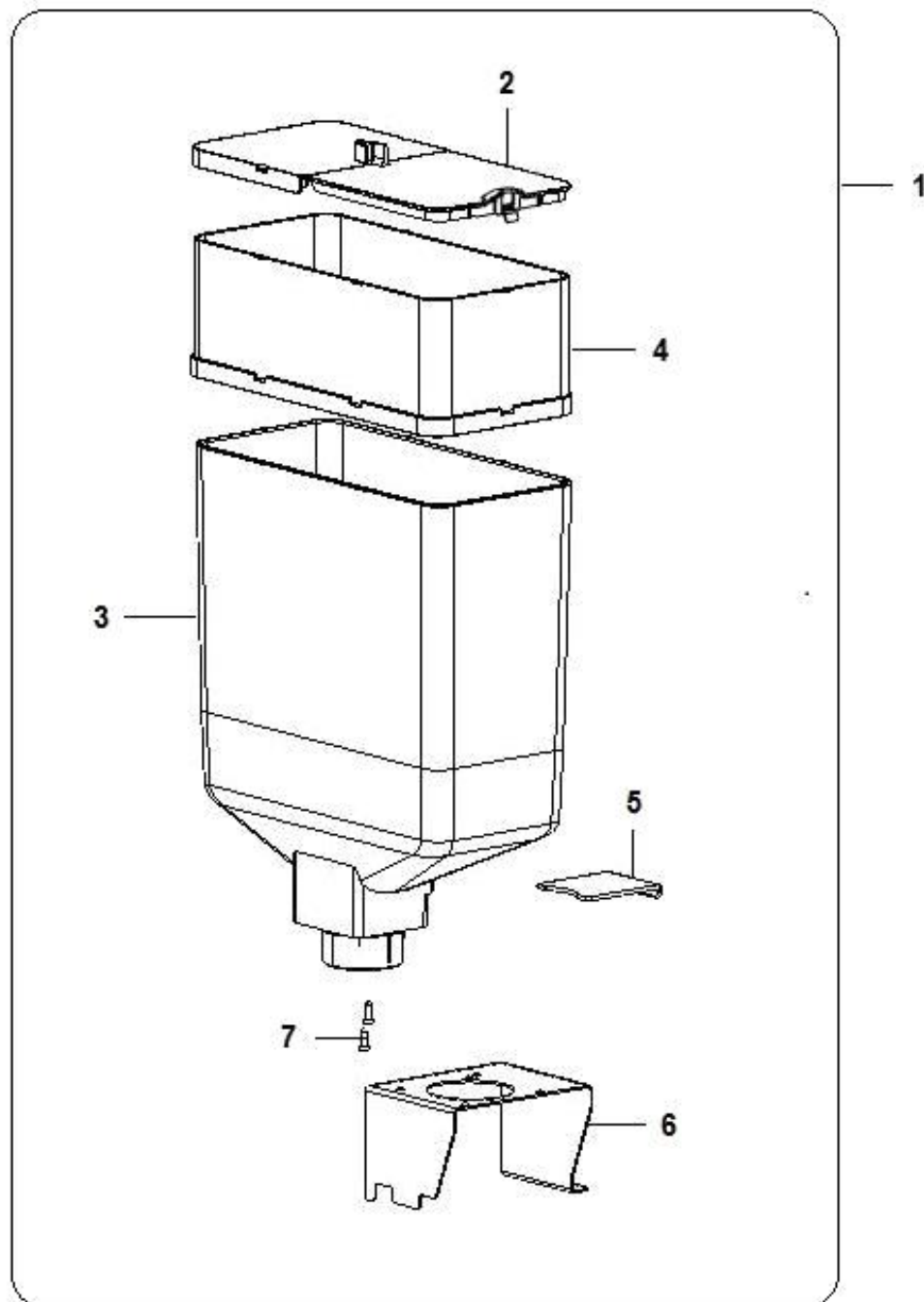
Pos.	Code	Description
0001	85003110-04	3 E-valves boiler assy
0002	25021516-01	24VDC group of 3EV 2ways d.2mm
0003	19059411-03	TEATO NEW ELECTROVALVE BLOCK SPACER
0004	32065416	4x12 screw
0005	32068316	TCEI 4MAX35 screw
0006	36350116	O-Ring 2025
0008	04041316-01	ELBOW CONNEC. 1/8M GAS PIPE 6/4 DEP
0009	18002516	copper gasket
0010	26050846	Temp.sens. w/connector (inox)
0011	13008031	CORPO CALDAIA ESPRESSO OT57
0012	29004312-02	Boiler flange w/resistance 230V AISI 316
0013	35157616	plain washer Ø.4,3 ac.
0014	35160316	d. 4,2 IX self locking washer
0015	32067916	TCEI 4MAX20 screw
0016	32068216	4MAX30 screw
0017	25020856	3ways elect.valve24Vdc(0-7,5b)
0018	04040316	drain valve + OR 1/8 GAS
0019	05143815	boiler gasket
0020	23020626	male tab
0021	25020516	automatic recharge clixon110°
0022	25020616-01	manual recharge clixon (135°)
0023	32055536	TCEI 4MAX16 screw
0024	01599411-02	Thermoregulator spring
0025	35153426	washer
0026	04034616	Turning elbow connection 1/8-1/8
0027	25038726	el.valv 2ways D.2,9 24DC
0028	04061016	Male elbow connection 1/8 D.6.5



Pos.	Code	Description
0001	85020240	3 E-valves boiler assy
0002	29008120	ASS.RESISIST.SMONTABILE 230V
0003	05143815	boiler gasket
0004	13008031	CORPO CALDAIA ESPRESSO OT57
0005	04040326	drain valve + OR 1/8 GAS
0006	25020856	3ways elect.valve24Vdc(0-7,5b)
0007	25021516-01	24VDC group of 3EV 2ways d.2mm
0008	19059411-03	TEATO NEW ELECTROVALVE BLOCK SPACER
0009	26050846	Temp.sens. w/connector (inox)
0010	18024516	copper gasket
0011	04041336	drain valve + OR 1/8 GAS
0012	25020546	automatic recharge clixon110°
0013	25020656	CLIXON 135° C RIARMO MANUALE C/FIL.M5
0014	32068316	TCEI 4MAX35 screw
0015	32065416	4x12 screw
0016	32055536	TCEI 4MAX16 screw
0017	35153426	washer
0018	23020626	male tab
0019	32068216	4MAX30 screw
0020	32067916	TCEI 4MAX20 screw
0021	35157616	plain washer Ø.4,3 ac.
0022	04034616	Turning elbow connection 1/8-1/8
0023	25038736	el.valv 2ways D.2,9 24DC
0024	04061016	Male elbow connection 1/8 D.6.5



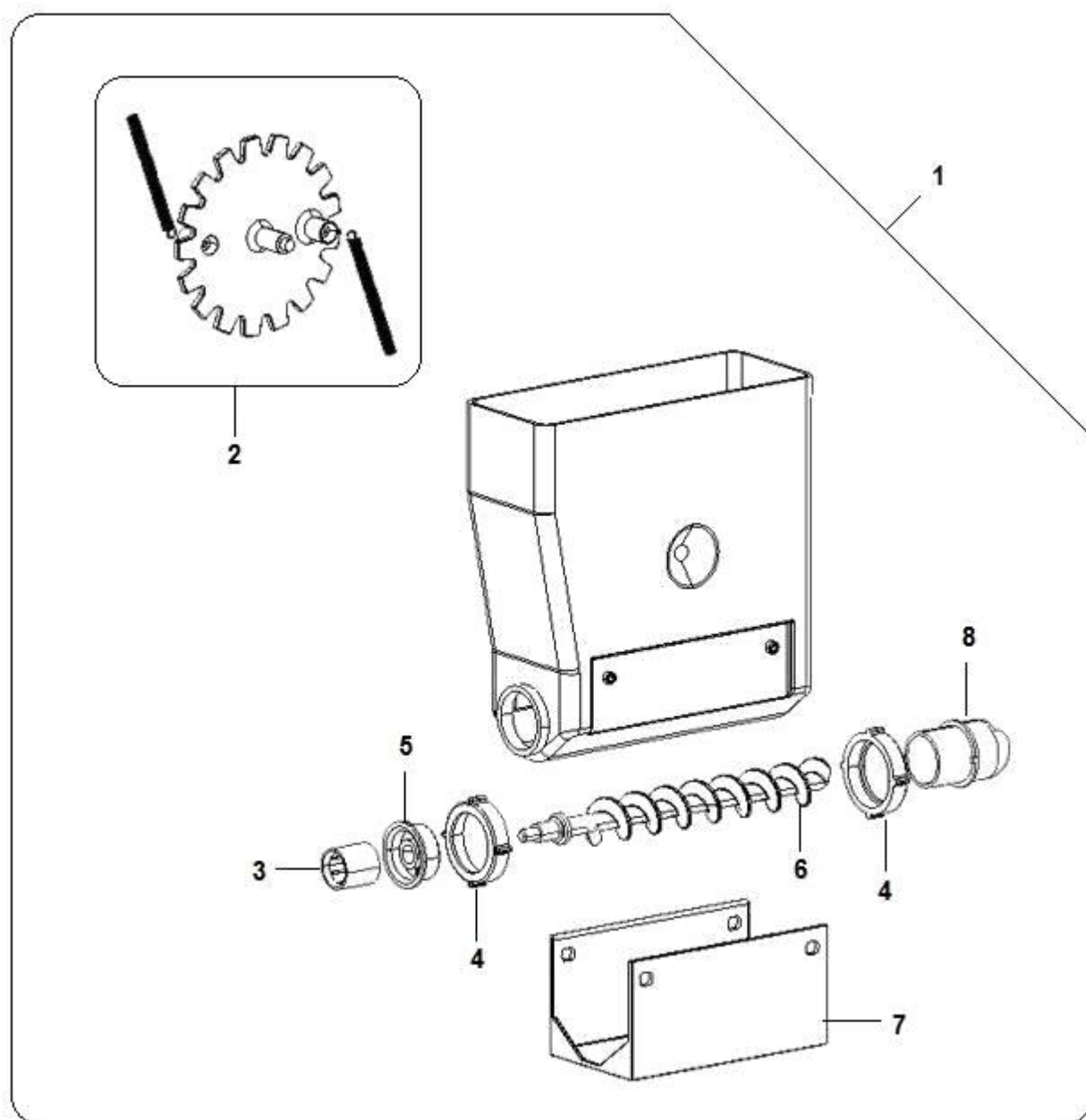
Pos.	Code	Description
0001	28007110-01	OR-SI-ANT cup dispenser assy
0002	26005136	microswitch with wheel
0003	08004111	microswitch insulation
0004	05121115	ring movement cam
0005	32025716	3MA x 16 TC screw
0006	32230566	screw self-tapping 4x18
0007	05136215	Cups dispenser rotation bear
0008	05136115	cup dispenser motor pinion
0009	32025516	3max10 tc screw
0010	20019316-02	24V DC 2,2nF 100V w/varistore motor
0011	05120915M37	cup diam.regulation ring brown
0012	05131020-01	CUP DISPENSER COCHLEA ASSY
0013	26005136	microswitch with wheel
0014	05136015	cam for cup turret rotation
0015	05120615M37	cupdispencer lower cover brown
0016	05121015	pegaso funnel
0017	32222816	2.9x9.5 self-tapping screw
0018	32010936	4,0X30 UNI9707 tapping screw
0019	05120815M37	cups ejecting ring brown
0020	05346312	upper cover c/pop brown
0021	05121215-01M37	Cup dispen.microswitch supp.brown
0022	26017026	10gr VRSRCMDA1-ers 16 micro w/out lever
0023	05121315-02	cup presence sensor
0024	01576411-01	Cups disp. microswitch support bracket
0025	20018416-01	24VDC 12RPM 2,2nF 100V gearmotor
0026	35160216	self-locking diam.3.2





COFFEE BEAN HOPPER COFFEE CAPACITY 3,7 Kg. (632)

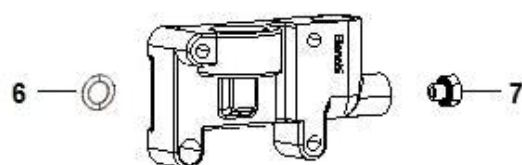
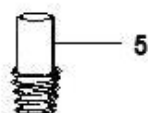
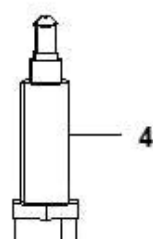
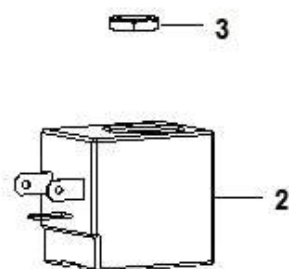
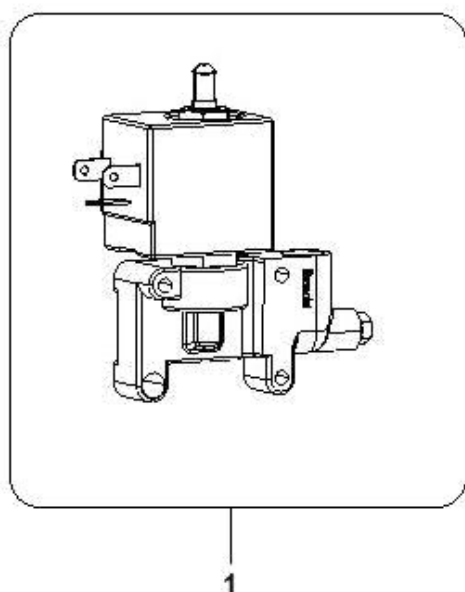
Pos.	Code	Description
0001	05251250	coffee hopper assy BV972 3,7kg
0002	05255015-01M00	RT/LT hopper cover BV972
0003	05251315M00	coffee hopper BVM972
0004	05256315M00	BVM coffee container extension
0005	05147915	SPRINT COFFEE HOPPER SEPARATOR
0006	01782431	BV972/952ANE29 beans cont.supp
0007	32010736	4,0X20 UNI9707 tapping screw





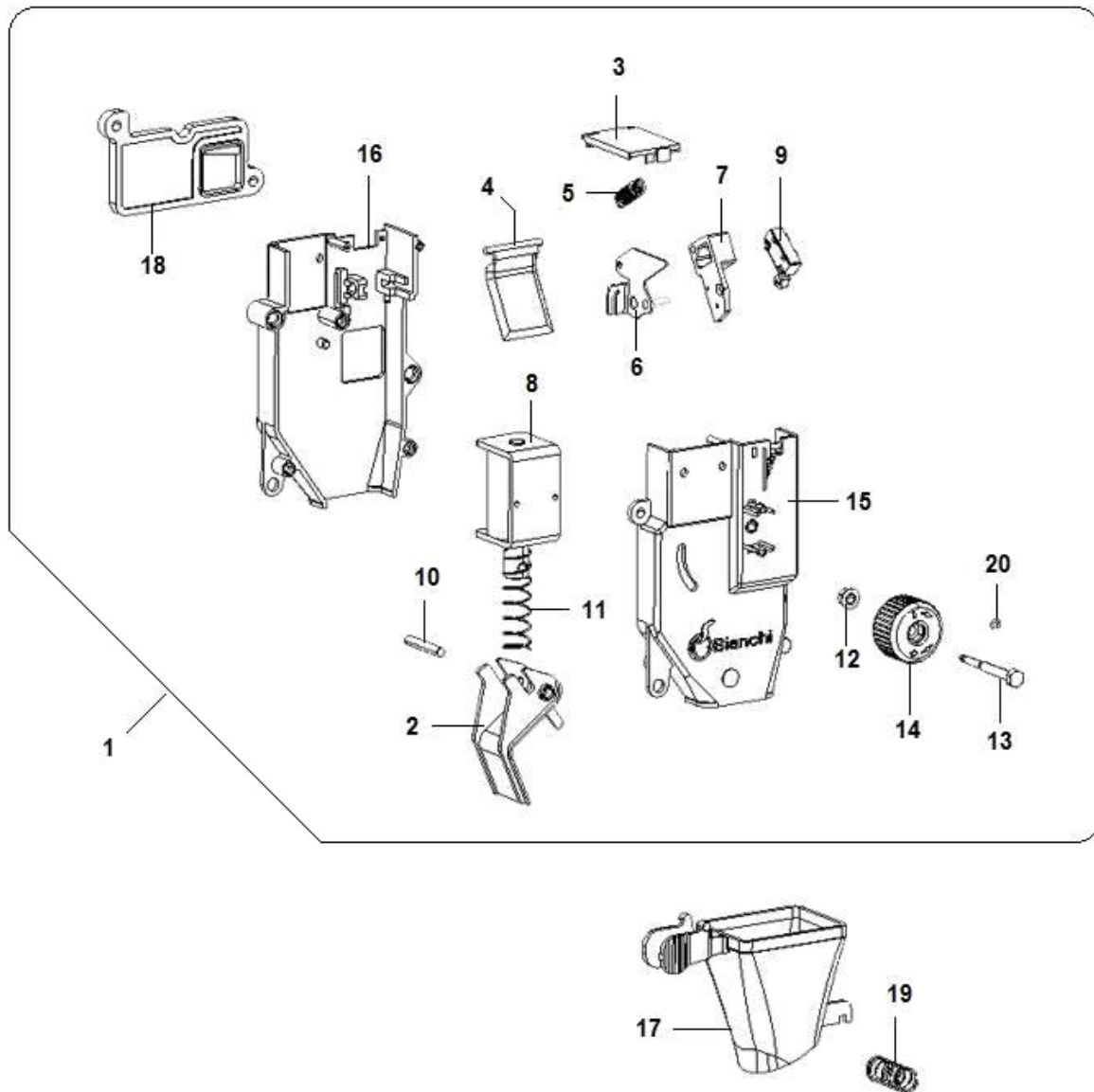
COMPONENTS CANISTER DOS. BVM 300 (908)

Pos.	Code	Description
0001	05203320	BVM300 dosing box w/out cover
0002	43017516	wheel diam 22,5+ springs 201A0519
0003	43017416	L20 101A0505B internal cylinder
0004	43017116	flange fix.ring NSF101A049A
0005	43017216	rear flange D.27 NSF101A0492B
0006	43017016	cochlea assy TN CHOC. 201A0510
0007	43097116	Product canister support
0008	43017316	front flange D.27 101A049AC

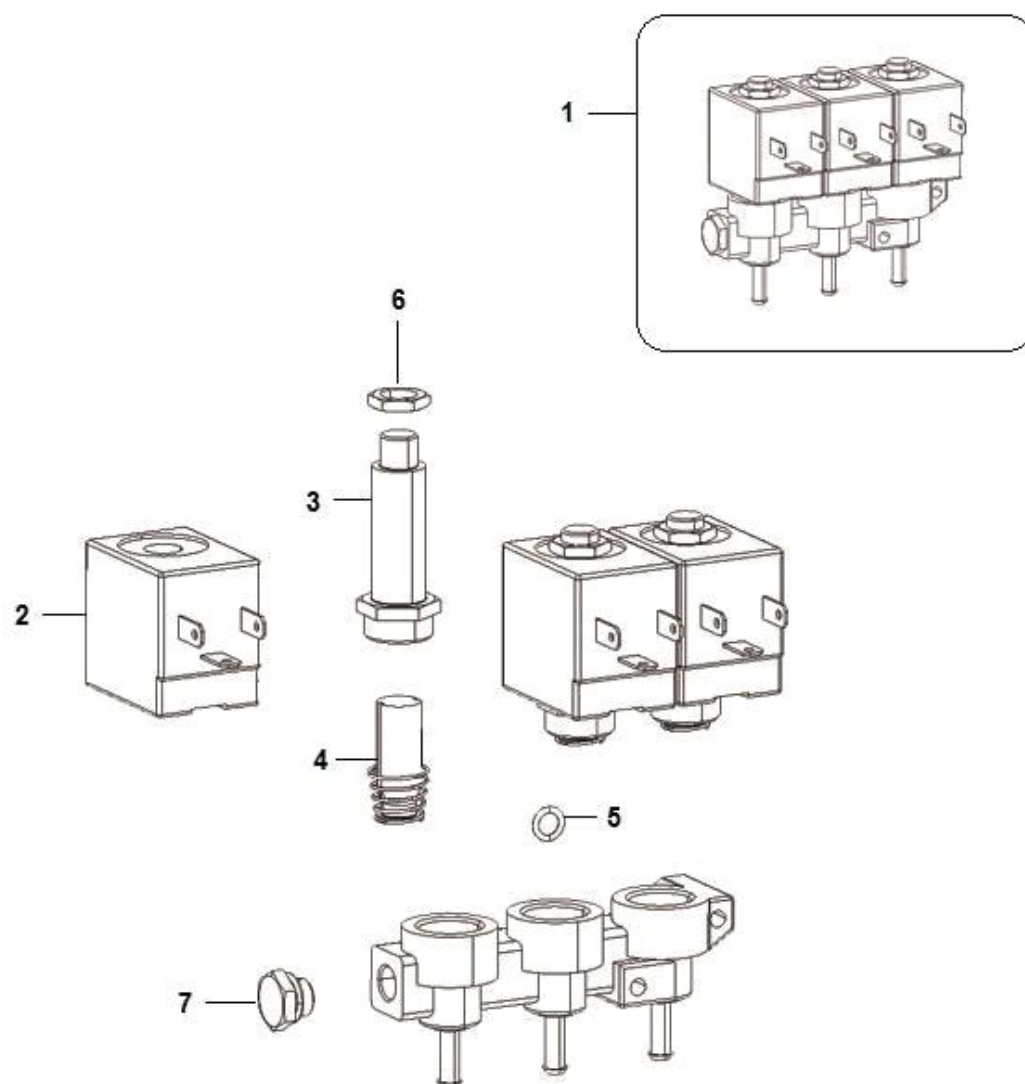
COMPONENTS EL-VALV. 3 VIE OLAB (930)

COMPONENTS EL-VALV. 3 VIE OLAB (930)

Pos.	Code	Description
0001	25020856	3ways elect.valve24Vdc(0-7,5b)
0002	25019416B	electrovalve coil 25019416
0003	43050616	Coil locking nut
0004	41037516	OLAB armature tube 3W
0005	41037416	PLUNGER OLAB TYPE 3 VIE
0006	43001316	9,63x6,07 o-ring viton
0007	43151796	Body cover 452/A + ORM viton gasket

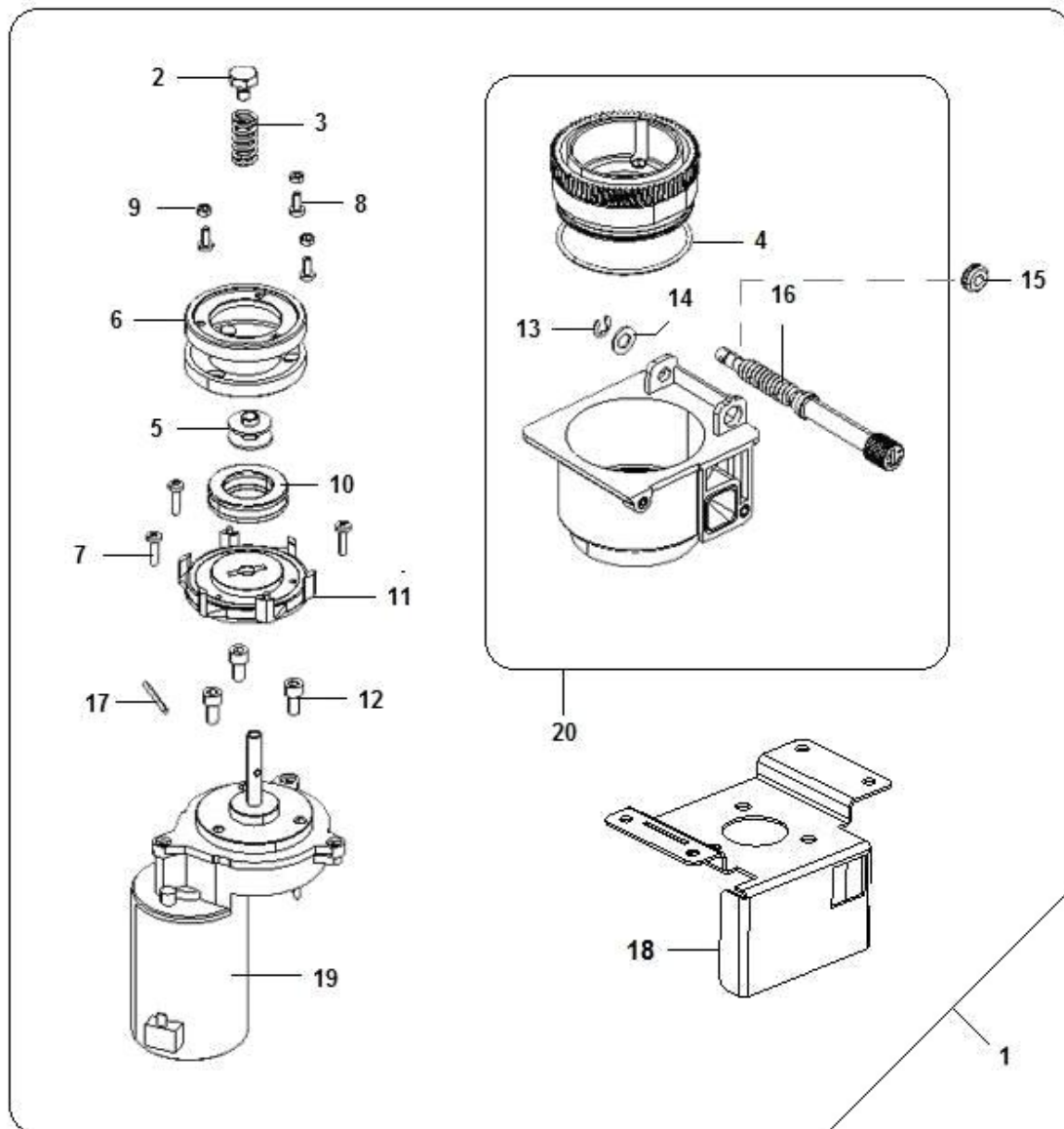


Pos.	Code	Description
0001	43002410-02	doser assy with spacer
0002	05135115-01	coffee doser tray
0003	05135025	top cover for doser
0004	05135315	coffee doser mobile bulkhead
0005	07020611	spring
0006	01586212-02	MICRO SUPPORT
0007	05154615	micro. coffee-dos. support
0008	20019146-01	magnet 5% 24v dc
0009	26029616	microswitch with cable(proof)
0010	33051716	4x25 IX parallel pin
0011	07020511-01	magnet spring
0012	34115316	M4 nut with washer
0013	19058911	adjusting screw for micro
0014	05135215	dose adjustment knob
0015	05134815	Doser front cover w/inserts
0016	05134925	Doser rear cover
0017	05135415-01M37	Cut coffee funnel
0018	05155615-01	spacer
0019	07020911	coffee funnel spring
0020	37000816	seeger ring

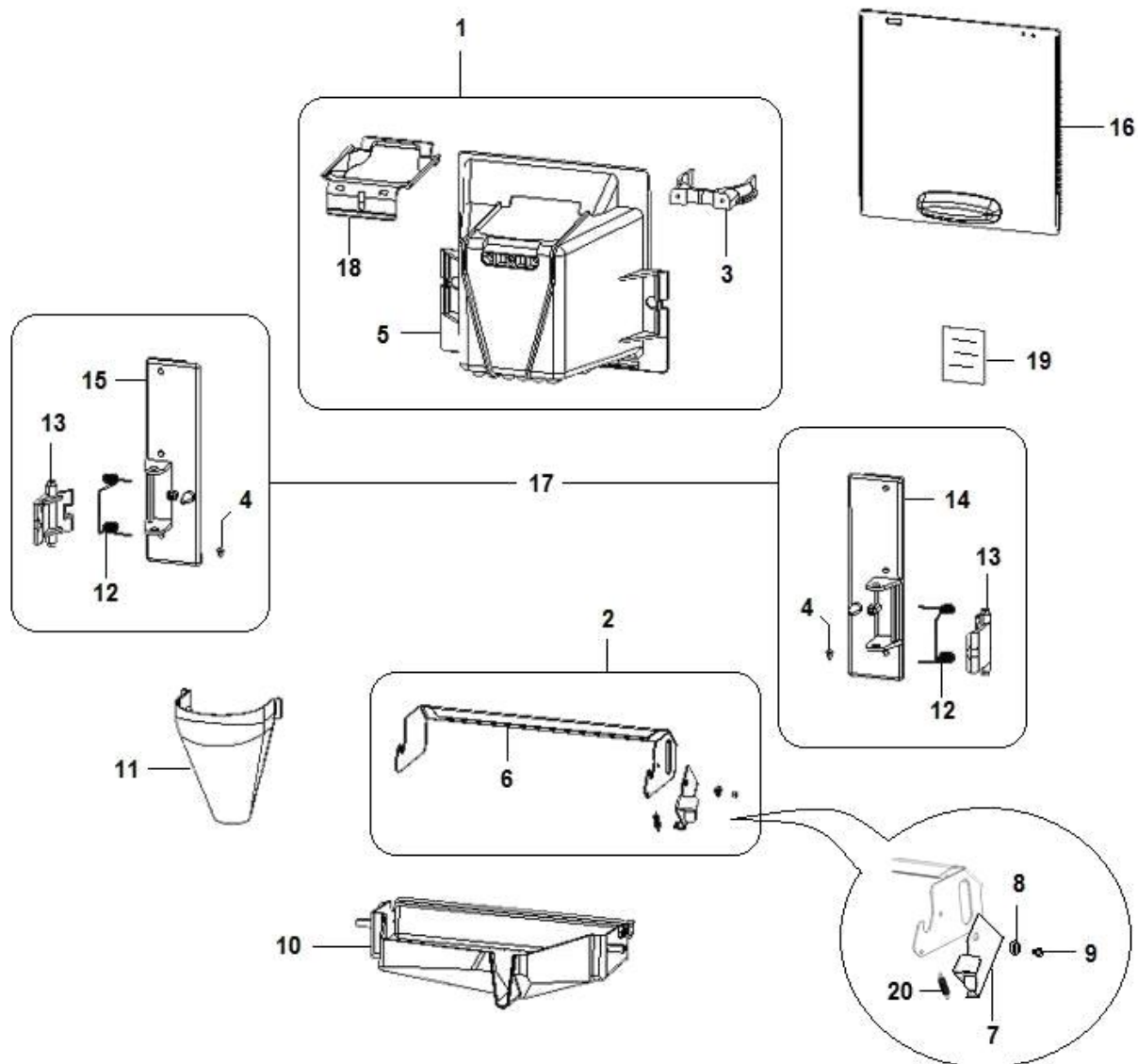


Pos.	Code	Description
0001	25021516-01	24VDC group of 3EV 2ways d.2mm
0002	25019416B	electrovalve coil 25019416
0003	41037316	ARMATURE TUBE OLAB
0004	41037216	OLAB plunger 2W
0005	43001316	9,63x6,07 o-ring viton
0006	43050616	Coil locking nut
0007	43031516	Threaded cap 1/8NICH.6084/2N

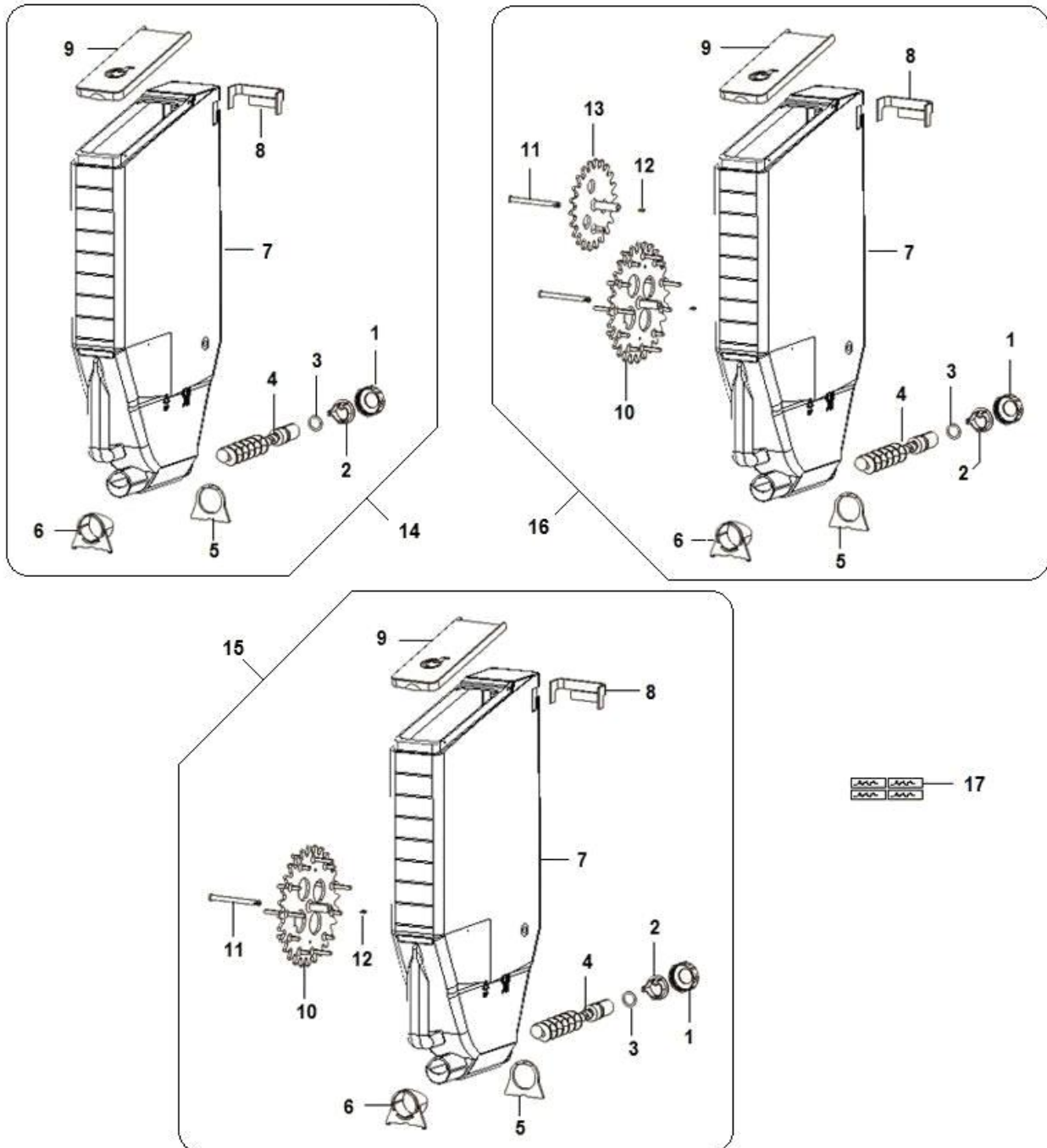
ASSEMBLY GRINDER LEI 400 (1069)



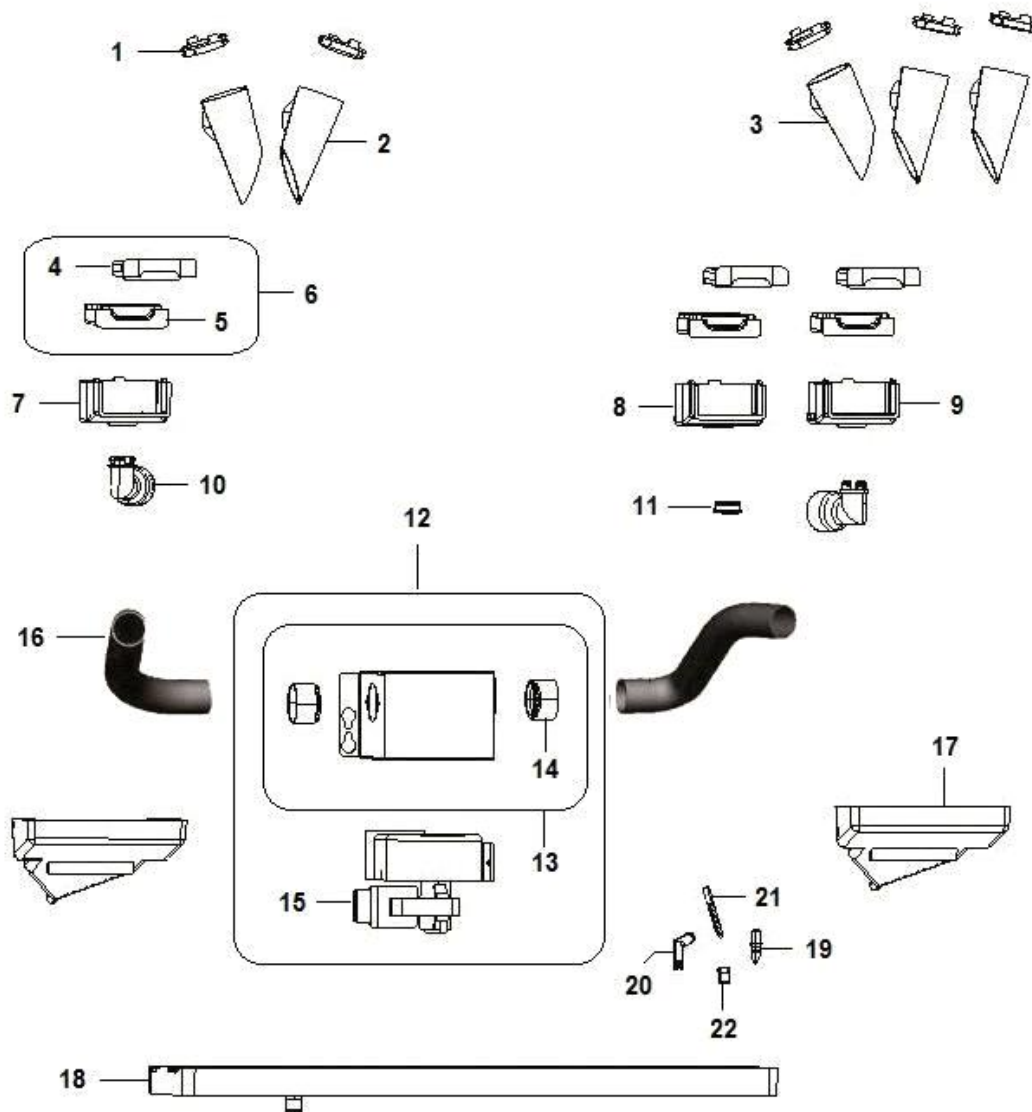
Pos.	Code	Description
0001	86001370-01	grinder assembly LEI 400
0002	19059021	screw for ametek spring
0003	07020411	grinder holder spring
0004	36211316	O-ring 3262 NBR 70 SH
0005	19060411	bush with washer
0006	18007326	D= 64 grinder blade 12teeth
0007	32060816	4MAx16 TCscrew
0008	32060516	4MAx10 screw
0009	34102816	4MA hex nut
0010	19059216	bearing
0011	13008211-03	Mobile blade support
0012	32135316	MA6X12 cross-headed embedded hexagon Zn
0013	37001116	Ø 6 seeger ring
0014	35168826	flat washer D.8,4*15,5*1,2
0015	23004086	cable damper(6*15 - rubber)
0016	05134715	grinder adjustment screw
0017	12017411	wire D30x30
0018	01586971-01	LEI 400 grinder support
0019	20020616	24VDC grinder Ametek gearmotor
0020	43018910-01	grinder chamber assy w/knob



Pos.	Code	Description
0001	05108320-01M09	black cup station
0002	01525010-02	drop tray with lever for Antares
0003	05000315M09	CUPS BLACK FORK
0004	05099116	blow-hole rubber cap
0005	05103225-01	black cup station
0006	01452011-03	Dispensing chamber tanksupport
0007	01524511-01ZNC	drop tray lever
0008	19054411	rivet bush
0009	33050496	RIVETTO 3,2X8 ACC-ACC
0010	05103715-02M09	drops collection tray black
0011	05103815-01	dispensing chamber funnel
0012	07017311	catch lever spring
0013	05103525-01	black cup station lock-lever
0014	05103325-01	black cup station lever suppor
0015	05103425-01	Black LT product exit support
0016	05272715-02M00	dispensing chamber door
0017	43127110	cup station support LT/RT assy
0018	05266315M09	Cup station protection collar
0019	30273111-01	Cup station precaution labels
0020	07012411	coin channel spring



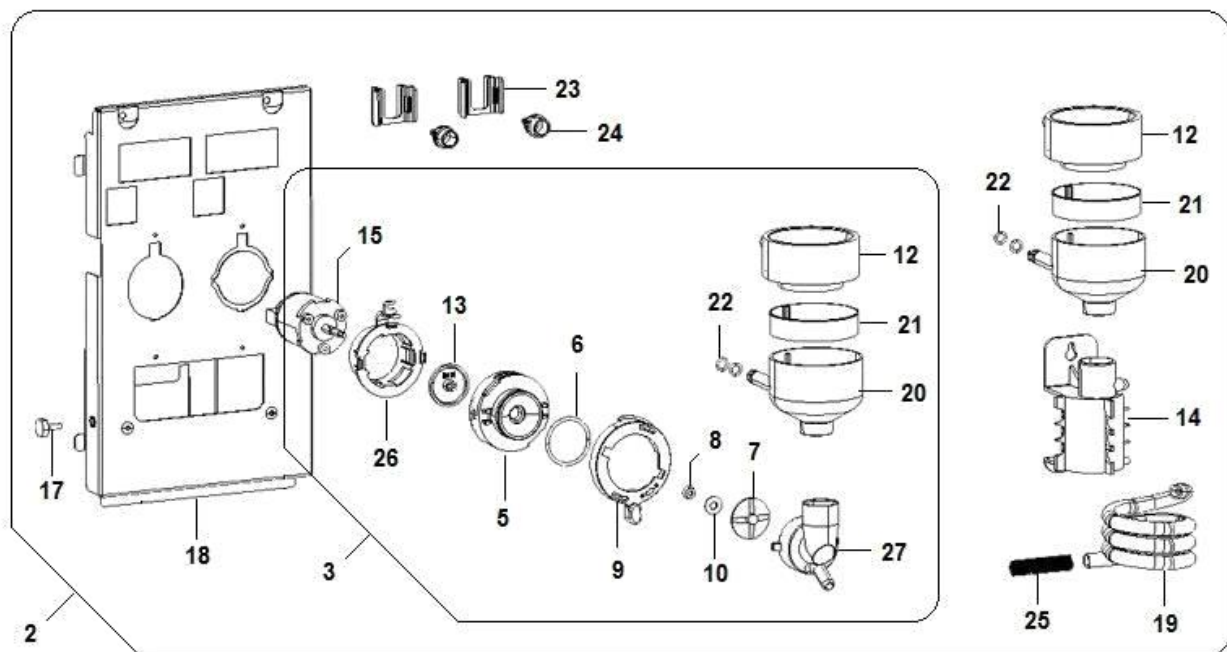
Pos.	Code	Description
0001	05277815M00	NUT
0002	05277615M79	bush
0003	36364016	Joint 3068
0004	05277915-01M79	COCHLEA
0005	05280915M79	prod canister rear foot
0006	05280815-02M79	prod canister front foot
0007	05277555M00	product canist H495 18,5nozzle
0008	05292415M79	Rear hook product canist
0009	05277715M79	product canister cover
0010	05112215-02	main cogwheel for canister
0011	05133115-01	canister pivot
0012	05160215	wedge for canister pivot
0013	05112315-01	secondary cogwheel for caniste
0014	96073540	canister H505 w/out wheel18noz
0015	96073550	canister H505 1wheel 18nozzle
0016	96073560	canister H505 2wheels 18nozzle
0017	30064911-01	Batcher box PVC labels






VACUUM CLEANERS & PARTS OF COMPLETION (1227)

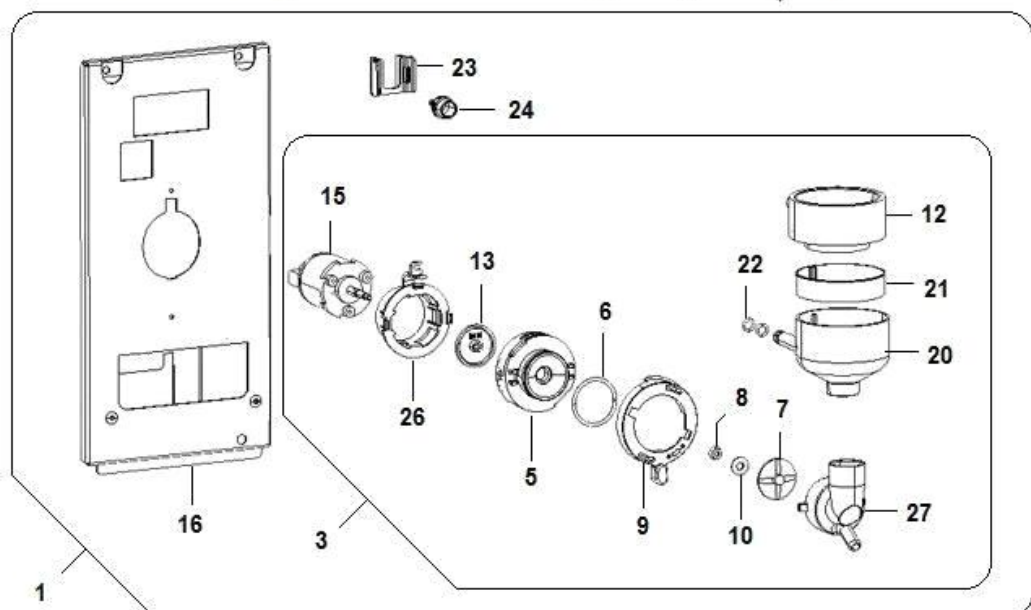
Pos.	Code	Description
0001	05160415-02M37	powder funnel cap brown
0002	05160655	brown right powder funnel l= 10
0003	05160665	brown left powder funnel l= 101
0004	05247715M37	BV931 single suction box cover
0005	05247615M37	BV931 single suction box base
0006	05248310	BV931 suction tray assy
0007	05245715M09	Single closed suction box
0008	05245735M09	Single RT suction box
0009	05245745M09	Single LT suction box
0010	05248115-02M09	Suction pipe joint
0011	05248215M37	Suction box cap
0012	01831310-03	BV971 IVS aspirator assy
0013	06014312	aspirator box assy
0014	05071915	aspiration pipe connection
0015	20006356	aspirator w/spacer 952/972
0016	09031113	28x33 Leviflex pipe
0017	05117415M37	DOUBLE DROP COLLECTION TRAY BR
0018	05245615-01M09	BV972 brown express/instant drop tray
0019	05096035	brown straight dispensing nozz
0020	05089815-03M37	brown elbow dispensing nozzle
0021	05099715-01	white L= 48 nozzle
0022	05099615	nozzle bush

ASSEMBLY MASCHERE MIXER (1233)


11 — Cabl. motofr + copp.risc. Lei 400

28 — 

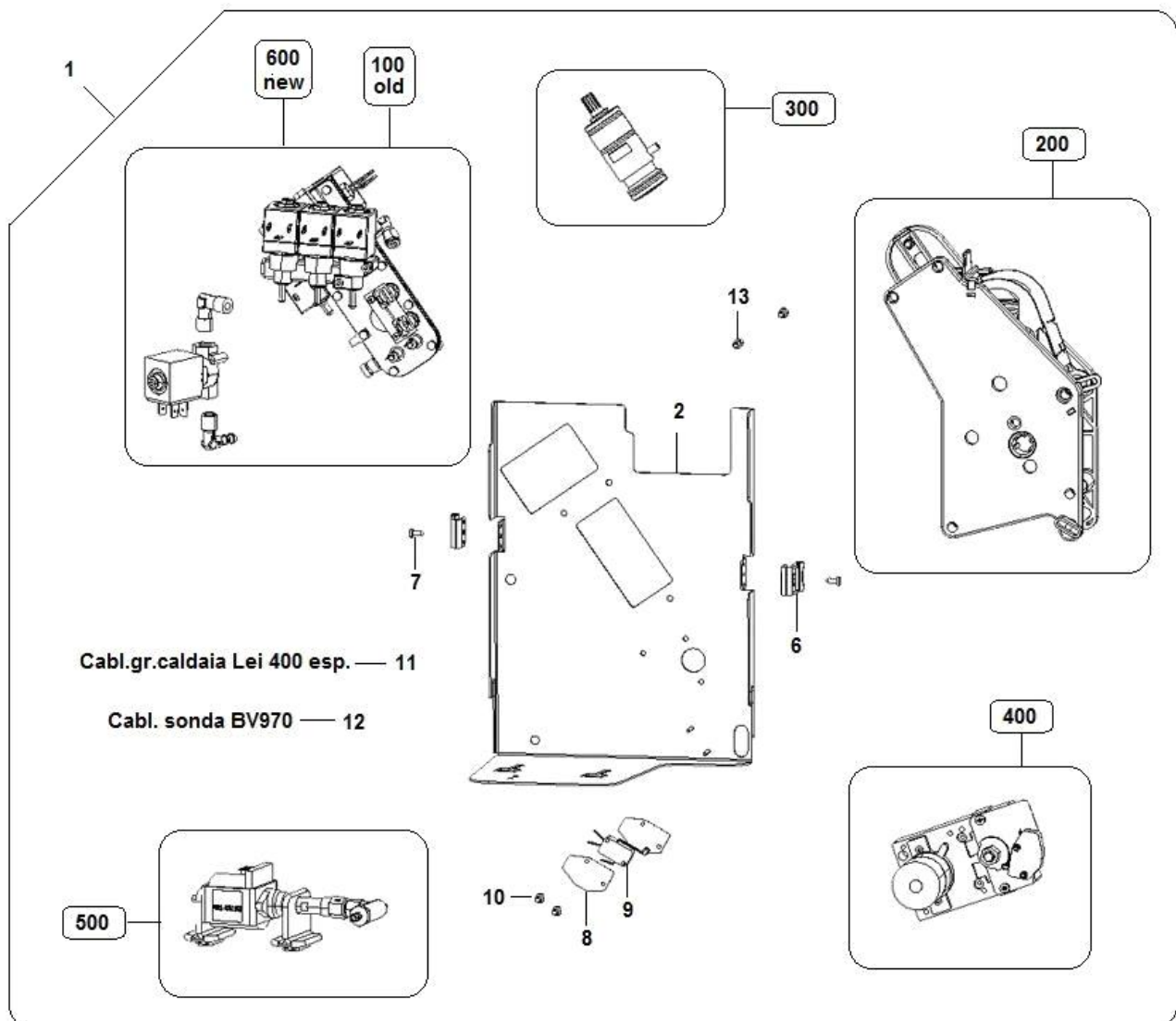
4 — 



Pos.	Code	Description
0001	96074130-02CL	C/O MASC.MX SING.NO/RIS.LEI400
0002	96074020-03CL	LEI400 double mixer mask assy
0003	43126810M37	MB mixer w/collar+ brown cover
0004	05122415	milk reduction
0005	05243112	Mixing room flange support as.
0006	36210716	OR 3131 gasket
0007	05111825	mixer impeller
0008	36351215	green V-seal gasket
0009	05240915M37	Mixing room blocking flange
0010	35155236	level ground washer Ø 4.3 IX
0011	22200212	LEI400mixer+ heat.chamber cable
0012	05113825	brown mixing bowl cover
0013	05154015	mixer protection disk
0014	05141815-01M37	Brown tea serpentine support
0015	20020036	24VDC mixermotor w/o cable
0016	06006722-01	LEI400 LT single mixer mask
0017	19055521	lock rod screw
0018	06006822-01	LEI400 RT 2mixers mask assy
0019	09087843-02	7x11 brown silicone pipe
0020	05113745	brown mixing bowl
0021	05132425	brown mixing bowl collar
0022	36203816	OR 106 6,75/1,78 gasket
0023	05159025M37	rubber holder connection suppo
0024	05132525	brown r. holder connec.for 3,5
0025	07017711	tea serpent. spring
0026	05241115-01M37	Motor support flange
0027	05111625	brown mixing chamber
0028	05102225	brown mixing chamber reduction

Pos.	Code	Description
0001	27003356	POMPA OLAB 22001230V50Hz15BAR (098760)
0002	04041026	Male unleaded anti return valve
0003	04040916-02	SAFETY VALVE 11BAR PRO
0004	05259515M09	Pump support (ULKA/FLUIDOTECH)
0005	05240015M00	3ways connector 9mm ext.
0006	24012116	flow sensor
0007	09110016-01	CALIBRATED Pmax 68BAR PTFE 6x4 TUBE
0008	09029763-01	5x9 transparent silicone pipe
0009	09029753-01	8x12 silicone transp.pipe
0010	05102225	brown mixing chamber reduction
0011	25022616-02	Clixon Microtherm F11 100° C
0012	05036515-01M00	drain tube plug
0013	09087843-02	7x11 brown silicone pipe

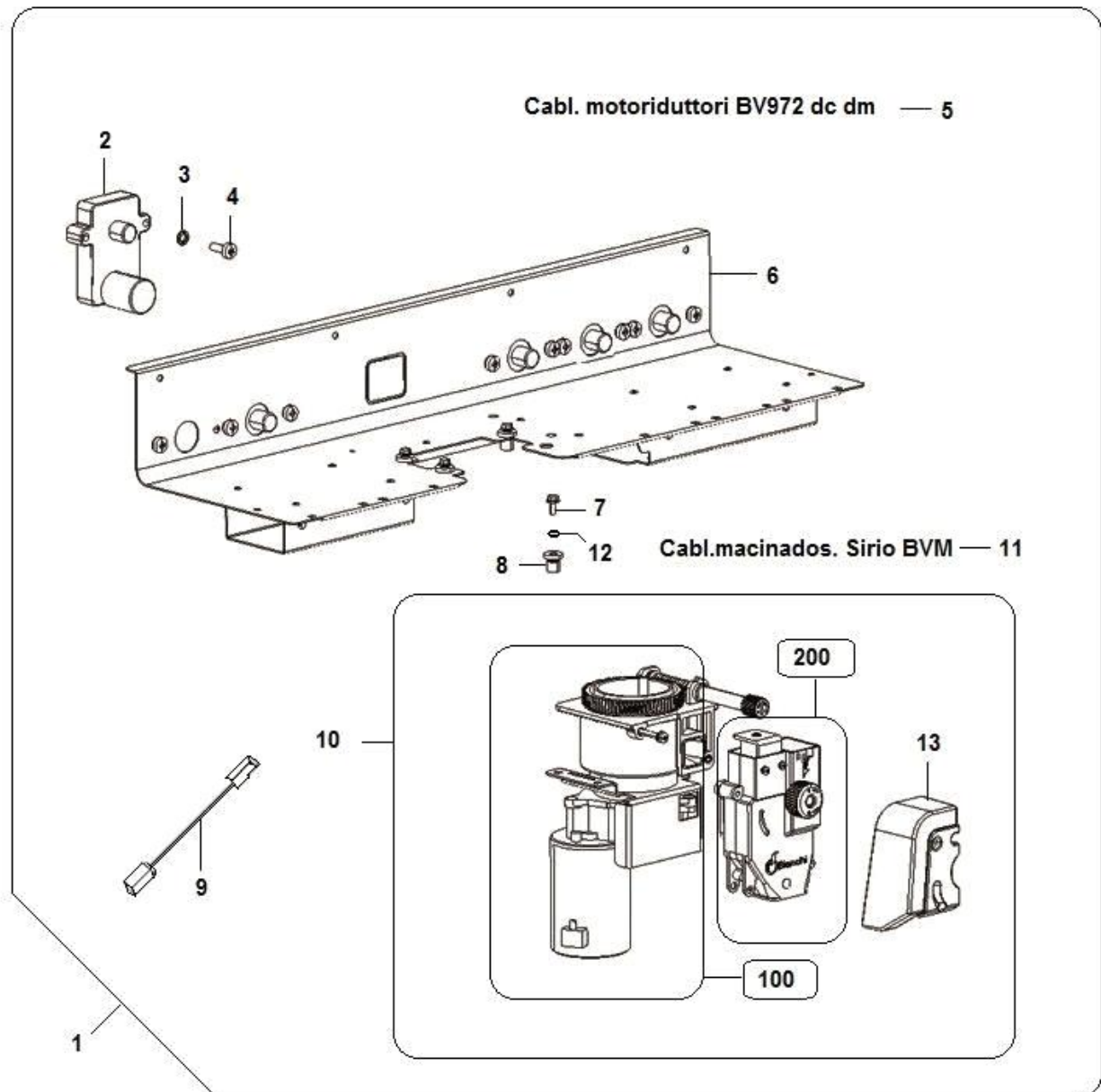
ASSEMBLY PLATE GR-COFFEE LEI 600 (1292)





ASSEMBLY PLATE GR-COFFEE LEI 600 (1292)

Pos.	Code	Description
0001	95011650-06CL	LEI 600 coffee group plate assy
0002	06003412	coffee group plate assy LEI 400
0006	05242415M37	Graphite plate blocking spring
0007	32227256	3.9x9.5 self-tapping screw
0008	08004111	microswitch insulation
0009	26005136	microswitch with wheel
0010	34102716	M3 hexagonal nut
0011	22200312-01	boiler group cable LEI 400 ES
0012	22178412	BV971 IVS PROBE WIRING
0013	19056011	group fixing pin

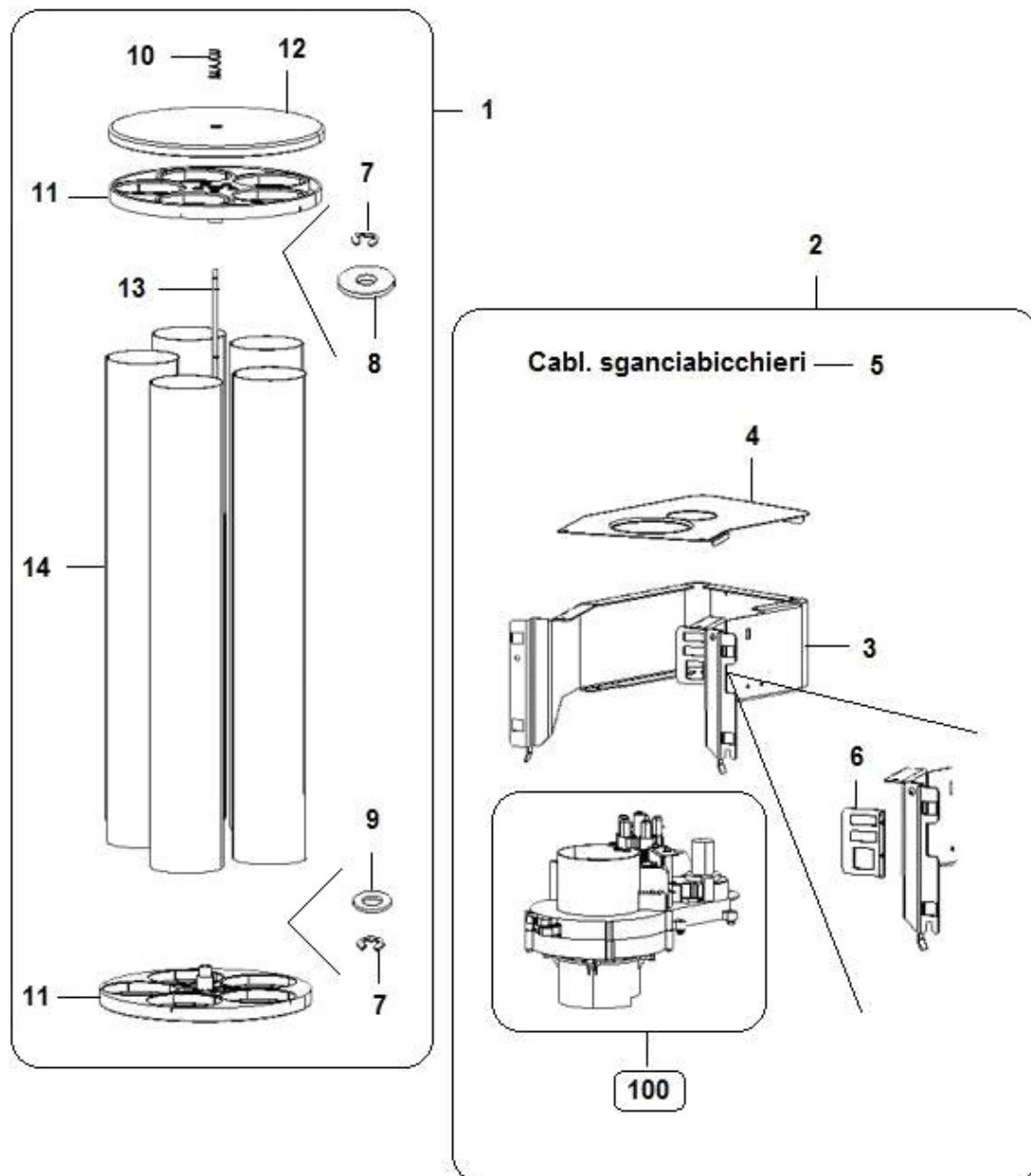




ASSEMBLY MACINADOS. SUPP. SCATOLE LEI 600 (1291)

Pos.	Code	Description
0001	96071840CL	grind dos canist supp assy 600
0002	20017026	100 rpm 24V DC gearmotor w/o c
0003	35160516	6.2 self-locking washer
0004	32135526	DIN7984 6MAX16 screw
0005	22178122	BV972 DB MOTORS WIRING
0006	01967622-01	gearmotor box supp assy LEI400
0007	32090636	TE 5MAX18 screw
0008	19119116-01	Rubber insert M5
0009	22126622	AMETEK FAST 4,8 grinder motor
0010	96057670-02	LEI400 coffee grinder-dispenser assy
0011	22171512-01	grinderdoser cable BVM
0012	35160416	self-locking washer diam.
0013	05301615M37	Coffee grinderdoser carter

ASSEMBLY COLUMN CUP DISPENSER (1287)

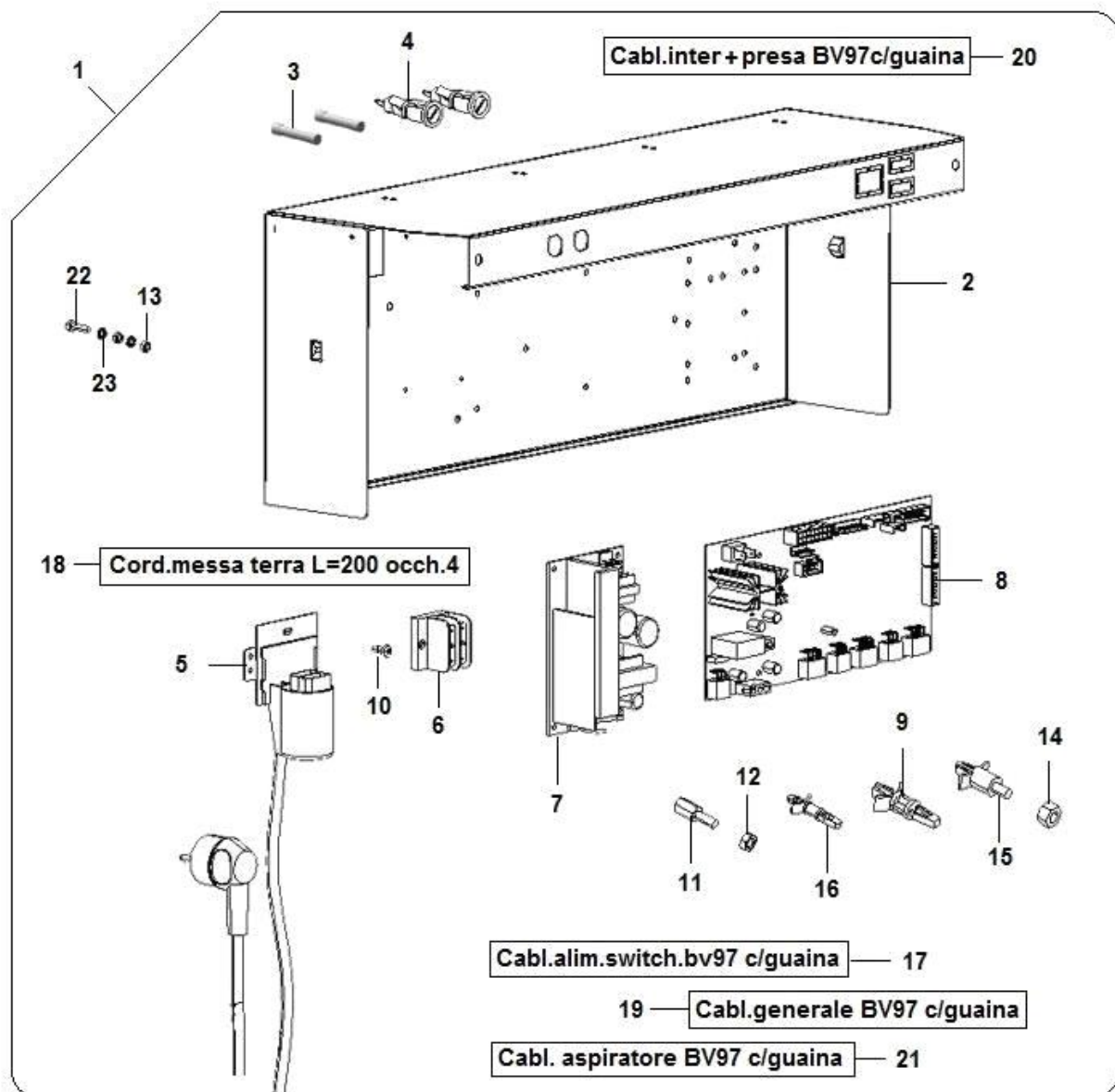




ASSEMBLY COLUMN CUP DISPENSER (1287)

Pos.	Code	Description
0001	28006980	cup turret as. LEI600 75*77*612
0002	28011130-06	BV971 cup disp.assy
0003	06050712	Cup dispenser frame assy
0004	01826741	BV971 IVS cup dispenser cover
0005	22178612	BV970IVS cup dispenser wiring
0006	01826811-01	Cup dispenser connector plate
0007	37001016	snap ring
0008	35157816	Ø 5.3x15x1.5 plain washer
0009	35155316	flat washer D. 5,3*10*1 ZN
0010	07020711-01	spring
0011	05135615M09	cup dispenser disk black
0012	05146115M09	Black cups turret lid
0013	19059361	Cup column rod 605,5 LEI600
0014	09094161	75x77 PVC transp.pipe L= 612

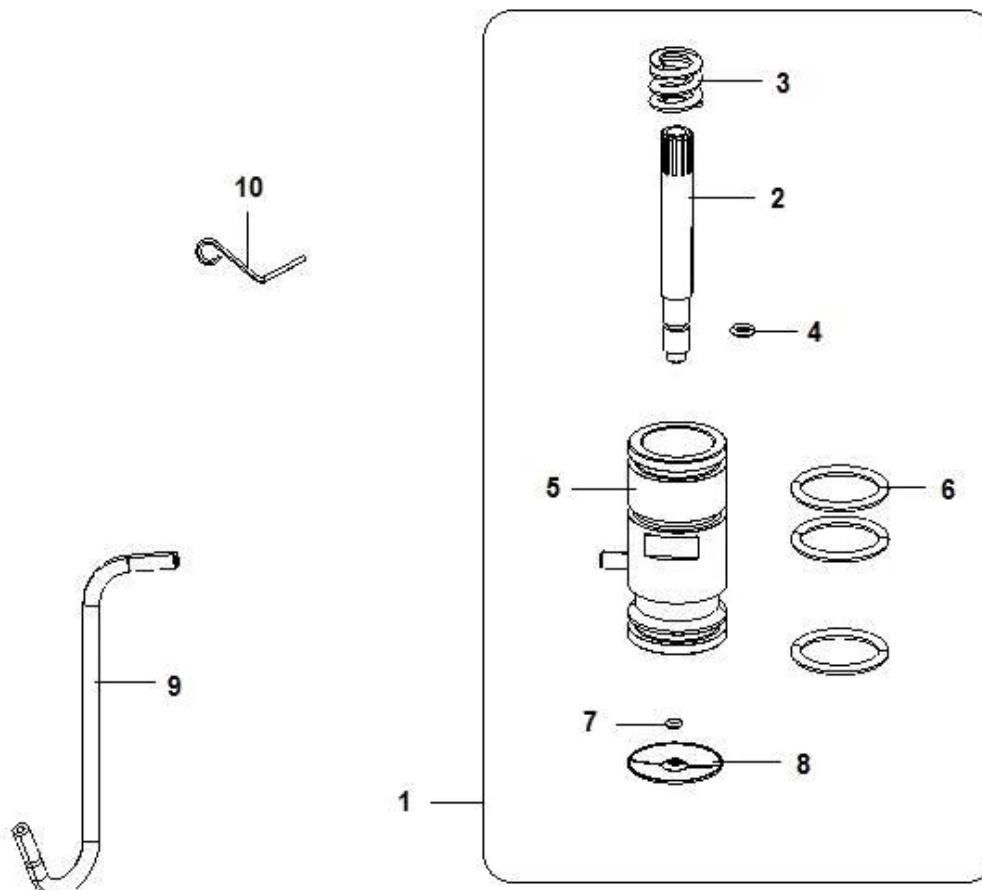
ASSEMBLY ELECTRICAL BOX LEI 600 (1286)





Pos.	Code	Description
0001	94035110-01CL	LEI 600 switch box assy
0002	06007311	central electr box LEI 600
0003	23014916	10 Amp. fuse
0004	23017316	6.3x32 snap-type fuse holder
0005	26026376	net filter quick connection with cable
0006	23038816	BVM plugs assy
0007	26048356-02	switch powersupply24V120W/360W
0008	26048416-01	Blue SMT micro256K POWER board
0009	05195216	board spacer
0010	32025216	Cross headed screw 3MAX6
0011	33071926	Metal spacer M/F/ M3L.
0012	34110116	3MA selft-locking nut
0013	34102826	Brass nut 4MA
0014	33065726	4M nut for board spacer
0015	33065526	L= 10 card spacer
0016	33072046	PLASTIC SPACER M/F M3 L. 7, 9
0017	22177512-01	BV97pow.sup.swit.cable w/sheath.
0018	22043022	GROUND WIRING L= 200
0019	22177412-03	BV97OIVS gener.cable w/sheath
0020	22177612-01	BV97swit. + socket cab. w/sheath
0021	22177712-01	BV97 aspirator cable w/sheath
0022	32055726	allen screw 4max* 20
0023	35160316	d. 4,2 IX self locking washer

ASSEMBLY PISTON(7)



ASSEMBLY PISTON(7)

Pos.	Code	Description
0001	05138130-01	Cegasa coffee-gr. piston assy
0002	05107725	piston filter knob
0003	07017611-01	piston spring
0004	36210916	OR2021 gasket
0005	05148032-01	Piston with valve seat
0006	36211816	OR4112 gasket
0007	36212116	OR2010 gasket
0008	16014812	filter assy
0009	09087873-02	3x6 brown silicone pipe
0010	07017511	piston block rod